

THE PETWORTH PARK ANTIQUES & FINE ART FAIR

Friday 15 - Sunday 17 May 2020

THE ANTIQUES DEALERS FAIR LIMITED



'The Abbey Gatehouse, Battle Abbey, Sussex' by John Inigo Richards, R.A., F.S.A. (1731-1810), signed watercolour on laid paper with a partial watermark, 1792, 8¼" x 19½", 1792, £2,500 from Karen Taylor Fine Art

The Petworth Park Antiques & Fine Art Fair

15 - 17 May 2020

Exciting plans are in the pipeline for many of the dealers exhibiting at this year's **Petworth Park Antiques & Fine Art Fair**, Petworth House and Park in Petworth, West Sussex GU28 0QY from Friday 15 to Sunday 17 May 2020. Organised by **The Antiques Dealers Fair Limited**, the event takes place in a specially erected marquee in the 700-acre deer park where some 60 dealers are gathering to stage a diverse and enticing array of traditional and contemporary paintings and sculpture; jewellery; clocks and vintage watches; glass; silver; ceramics; historical medals; antique enamels; traditional, mid-century and Art Deco furniture, lighting and objets d'art. A feast for interior design enthusiasts, collectors and visitors looking for an entertaining day out.



Silver gilt medal commemorating the defeat of the Spanish Armada by G van Bijlaer, 1588, £1,250 from Timothy Millett Ltd

As Petworth House and Park is looked after by the National Trust, the fair admits National Trust members free of charge. In a reciprocal arrangement, during the three days of the fair, antiques fair ticket holders are kindly given complimentary access to enjoy the nation's art treasures on display in the mansion and access to the Lancelot 'Capability' Brown landscaped grounds that inspired such art luminaries as JMW Turner.

Newcomers exhibiting at the fair include **Elaine Phillips Antiques**, one of the best regarded antique oak furniture dealers from the north of England. Other new exhibitors include **Burlington** bringing fine 19th and 20th century British and European paintings; **Karen Taylor Fine Art** and **Tom Rooth Fine Art**, both specialists in British and European art from the 18th century to the present day; and **Timothy Millett Ltd** who has dealt in historical medals and works of art for the last 35 years.

A fascinating area of collectibles is historical medals enabling people to follow history through objects or a theme that ties in with their particular interest. **Timothy Millett Ltd** is probably the leading specialist in this area and his stand is a treasure trove of yesteryear. An extremely rare medal that is bound to attract a lot of attention is the commemorative medal made for the defeat of the Spanish Armada, dated 1588. The obverse records the destruction of the Armada being driven onto the rocks while the reverse sarcastically satirises the vain attempts of the Pope, the Emperor Philip II, the Duke of Guise and other princes who had formed a confederacy against Elizabeth I. This medal, of which there are relatively few known, would have been produced at the time purely as propaganda, being handed out as a diplomatic gift to the protestant hierarchy. The price for this piece of history dating back to the 16th century is £1,250.



Gilt and silvered automaton mantel lighthouse timepiece by AR Guilmet, c.1895, £7,950 from Richard Price

Dealers are often on the look out for pieces with a local connection or provenance to the vicinity. Some interesting finds include a watercolour of Battle Abbey by John Inigo

Cont'd

P.O. Box 119
Cranbrook
Kent TN18 5WB
Telephone
01797 252030
E-mail
info@adfl.co.uk
Web
www.adfl.co.uk
Reg. no. 04293279
(England & Wales)

Richards (1731-1810) priced at £2,500 from **Karen Taylor Fine Art**. The watercolour is inscribed 'outside gate Battle Abbey 1792'. Battle Abbey, a partially ruined Benedictine Abbey founded by William the Conqueror was built on the site of the Battle of Hastings at Senlac Hill. Today the Tudor manor house, built on the site by Sir Anthony Browne at the time of the dissolution of the monasteries, is occupied by Battle Abbey School. On the stand will also be a watercolour by Paul Sandby RA (1731-1809) of *A View of Tunbridge, Kent* inscribed and dated Tunbridge 1788. This delightful view of Tunbridge (the town of bridges) shows the Great Bridge over the river Tunn with the keep of Tonbridge Castle in the background (POA). **Burlington** is bringing an oil painting by Victorian artist Edward Wilkins Waite RBA (1854-1924) of *Cornfields at Fittleworth* (£12,000) or for country sports enthusiasts, **Haynes Fine Art - London & Cotswolds** is showing *On the Downs* by George Wright (1860-1942) priced at £25,000. George Wright was considered one of the best sporting artists of his time.



Rare Bilston Crouching Spaniel bonbonnière, c.1760, £6,500 from The Antique Enamel Company

Tom Rooth Fine Art has cleverly sourced the work of local artist Sue Viner, who lives outside Chichester. She creates the most exquisite botanical studies of flowers, vegetables, fruit, shells and feathers brimming with subtle textures and vivid colours using materials sourced from the earth. Her unique observations of the natural world are created using the refined ancient techniques of gilding and painting, with pigments bound in egg yolk, which are supplied by Sue's own bantam hens. Other picture dealers offering a comprehensive display of fine art are **Ashleigh House Fine Art, Blackbrook Gallery, Cambridge Fine Art, Elford Fine Art, Freya Mitton, Granta Fine Art, Lucy B Campbell Gallery, Ottocento, Rountree Tryon Galleries, Sarah Colegrave Fine Art, The Canon Gallery** and **The Hunt Gallery**.



Silver plated claret jugs, £395 from Stephen Kalms Antiques

Among the many returning exhibitors is BBC Antiques Roadshow clock expert **Richard Price**. A highlight on his stand is a rare automaton mantel timepiece of lighthouse form by AR Guilmet, c.1895, £7,950. **Timewise** is bringing vintage wrist and pocket watches by many of the world's leading makers such as Rolex, Patek Philippe and Vacheron Constantin. Furniture is the mainstay of any house and there is an excellent choice within the fair such as a Regency calamander wood table from **Augustus Brandt** (£6,950), a pair of elegant 19th century tub chairs from **Elaine Phillips Antiques** (£1,750), a Regency hall settee from **Millington Adams** (£10,900), a George IV card table from **Tim Saltwell** (£1,150) and a 19th century writing table from **Wilson's Antiques** (£2,250).



Art Deco heart-shaped opal, old cut diamond and 18ct yellow gold ring, £5,950 from Greenstein Antiques

The fair hosts an eclectic mix of dealers offering a wide selection of some of the best decorative arts. Stand-out pieces include 17th century tapestries, metalware, English Delft pottery, wooden carvings, treen and needlework from **Elaine Phillips Antiques**; Victorian and contemporary bronze sculpture from **Garret & Hurst Sculpture** and a handsome *Standing Cockerel* cold painted bronze by Franz Xavier Bergman (1861-1936) from **Hickmet Fine Arts**. Humorous 18th century hand coloured mezzotints priced around £850 each can be found with **S & J Abbott Ceramics Plus**, as well as antique English porcelain from **Jupiter Antiques**, 18th and 19th century British pottery from **Roger de Ville Antiques**, a striking Art Deco silver and gilded bronze study of an Egyptian dancer by Demétre Chiparus, c.1925, £6,250 from **Solo Antiques** and a wide variety of silver and glass from **Stephen Kalms Antiques** and **J H Bourdon-Smith Ltd**. More decorative pieces such as an attractive mother-of-pearl mirror, c.1890, can be found on **Wilson's Antiques'** stand.



'Prize Shorthorn Cow', oil on canvas, signed James Clark Snr, £4,950 from Blackbrook Gallery

The Antique Enamel Company debuted at the fair last May and returns with an extremely rare Bilston *Crouching Spaniel* bonbonnière, c.1760, £6,500 and an exquisite French four-colour gold and enamel snuff box, the lid finely painted with a stag hunt, by Casiez & Couleaux, 1810, priced at £26,500.



English regency mahogany hall settee in the manner of Gillows of Lancaster, c.1810, £10,900 from Millington Adams

Augustus Brandt creates an eye-catching and decorative stand reflecting the feel of the Petworth showrooms. Bringing refined, carefully selected and curated pieces, the interesting selection would define and complete any home, be it bronzes, an oversized

Cont'd

glass vase or oil paintings and textiles to intricate works of Dutch marquetry and grandiose Regency furniture. Petworth town has embraced the fair wholeheartedly. The collaboration of five dealers representing **Petworth Antiques Market** is squirreling away stock to create an airy, exciting, fun and enticing stand. "Its early days to know exactly how the stand will look but excitement is high," said Kathryn Mandry of Petworth Antiques Market.

The fair raises funds for the **Queen Elizabeth Scholarship Trust** and is supported by the **National Trust, Brilliant Gin, Hennings Wine, Anderson Rowntree Solicitors, First Class Holidays, Petworth Antiques And Decorative Arts association and Petworth Business Association.**

PRESS INFORMATION & JPEG IMAGES AVAILABLE FROM:

Gail McGuffie PR or IONA PR
T: +44 (0)7885 10 33 53 T: +44 (0)7721 030 825
E: MGailMcG@aol.com E: iona@ionapr.com

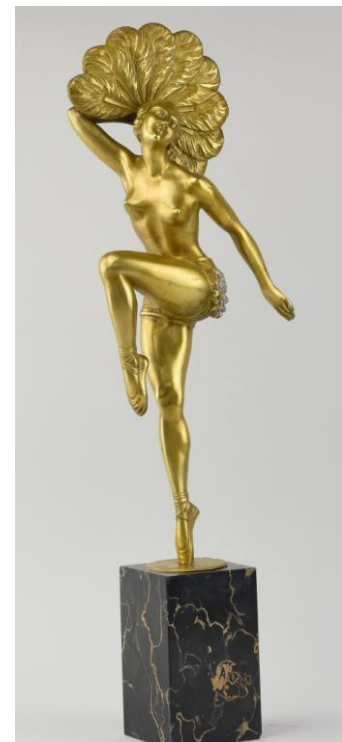
Notes to editors:

All items for sale at this fair are vetted for quality and authenticity. The majority of the exhibitors are members of the UK's two professional associations: **BADA** or **LAPADA The Association of Art & Antiques Dealers.**

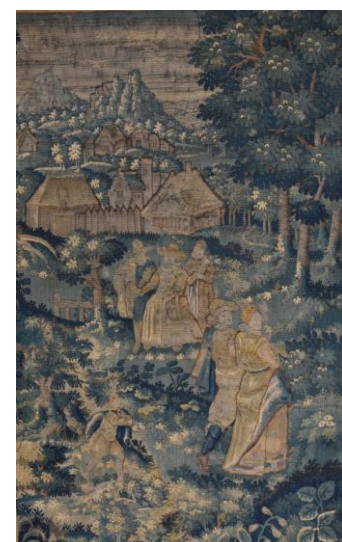
- Event:** The Petworth Park Antiques & Fine Art Fair
- Date:** Friday 15 - Sunday 17 May 2020
- Venue:** The Marquee, Petworth House and Park, Petworth, West Sussex GU28 0QY
- Opening Times:** Friday 11am-8pm, Saturday 10.30am-6pm, Sunday 10.30am-5pm
- Tickets & enquiries:** *£10 including catalogue (and re-admission)
The Antiques Dealers Fair Ltd +44(0)1797 252030 or info@adfl.co.uk and through Eventbrite <https://tinyurl.com/ty4kd3g>
- *Tickets include complimentary access to Petworth House and Park over the three days. Free entry to the antiques fair for National Trust members and Petworth House visitors
- Transport:** By Road: A272 Tillington Road (antiques fair entrance at New Lodges). AA signposted to the dedicated entrance at New Lodges
- Ample free parking in the specially located antiques fair car park in Petworth Park. Courtesy shuttle bus to/from Petworth town.
Pedestrian entrance through the main entrance of Petworth House
- Nearest railway station: Pulborough (approx 70 minutes from London Victoria)
- Nearest airports: Gatwick (approx 50 minutes), Heathrow and Southampton airports (approx 1 hour)
- Charity:** Queen Elizabeth Scholarship Trust (QEST) (charity no. 1152032) www.qest.org.uk
- Social Media:** Twitter & Instagram: @ADFLfairs,
Facebook: AntiquesDealersFairLtd/, 新浪微博
- Website:** www.petworthparkfair.com



'Estuary Scene' (detail) by Mary Fedden RA, oil on board, 1999, £18,000 from Freya Mitton



French Art Deco gilt bronze figure by Enrique Henri Molins Balleste, c.1920, £4,250 from Solo Antiques



17th century tapestry (detail) £3,250 from Elaine Phillips Antiques