

**NEW JUNE 2021 DATES
FOR THE PETWORTH PARK ANTIQUES & FINE ART FAIR
Friday 18 to Sunday 20 June 2021**

**THE
ANTIQUES
DEALERS
FAIR
LIMITED**



'Autumn Woods, Terwick Mill' by Ivon Hitchens (1893-1979), oil on canvas, 51 x 104cm, c.1944-5, £97,000 +ARR from Jenna Burlingham Fine Art

The Petworth Park Antiques & Fine Art Fair is now taking place in the grounds of Petworth House in Petworth, West Sussex from Friday 18 to Sunday 20 June 2021, since lockdown delayed its usual slot in May this year. This is the second time the event has had to be rescheduled due to the pandemic - last September the fair was successfully and safely held in its purpose-built marquee in the National Trust's 700 acre deer park to much acclaim.

A wide selection of disciplines covers centuries past right up to the present day, so visitors have a treat in store. Longstanding dealer **Santos London** is exhibiting at this event for the first time. With an international reputation for finding the best and rarest 15th to 19th century Chinese porcelain objects for discerning private collectors, museums and interior designers, this debut at Petworth Park adds another discipline to the variety already on offer. Amongst the pieces being set aside for the fair is a unique 29cm high 19th century Chinese export Dehua porcelain blanc-de-Chine figure of a maiden seated on a Buddhist lion, Qing dynasty. It belonged to the late HRH The Princess Margaret, Countess of Snowdon. It is sold together with a folder with documentation from Kensington Palace. Also from the Qing dynasty, c.1700, is a very fine and rare pair of Chinese export porcelain figures of Buddhist lions seated on pedestal pierced bases with *ruyi* heads, encircled by a pair of *chilong*, the male with one foot resting on a yellow brocade ball and the female with a yellow clambering cub, POA. Another first-time exhibitor is the campaign furniture specialist, **Christopher Clarke Antiques** from Stow-on-the-Wold in the Cotswolds.

There are paintings galore for sale, from different eras to the present day including by Sussex based artists past and present: Ivon Hitchens (1893-1979), whose work hangs in the Tate, moved to a caravan in the woods near Petworth when his London home was bombed during WWII. He and his family were drawn to the quintessentially English setting of Terwick Mill, near Midhurst, as a break from the cramped caravan. **Jenna Burlingham Fine Art** is showing *Autumn Woods, Terwick Mill*, oil on canvas, c.1944-45, £97,000 plus ARR, whilst **Thomas Spencer Fine Art** is bringing Hitchens' *Reclining Nude on Cushions*, pen on paper, dated 1966, selling for £2,200. Anna Pugh (born 1938), a leading British artist with an international following is admired as a colourist and story teller. She depicts the natural world enlivened by touches of the surreal. **Lucy B Campbell Gallery** represents Anna Pugh and will have a selection of her work for sale, including *Henry Watching Herons*, *Flying Fish* and *Red Rooster*, all acrylics on board each priced at £14,500. Graham Hill was born in West Chillington in 1903, but changed his name to Claude Muncaster in 1922. A watercolourist, who painted landscapes and marine paintings, he travelled extensively and became an associate of the Royal Watercolour Society in 1931. He advised on camouflaging ships during WWII, when training as a navigator with the Royal Naval Volunteer Reserve. Muncaster became President of the Royal Society of Marine Artists (1958-1974). He painted for the Royal family, often spending time at Sandringham. **Rountree Tryon Galleries** has his *View from the 5th tee at Cowdray Golf Club*, watercolour, 1927, selling for £1,650.

The Petworth Park
Antiques & Fine Art Fair

18 - 20 June 2021



19th century Dehua porcelain blanc-de-Chine figure, Qing dynasty, 29cm high, POA from Santos London



Original 1945 Patek Philippe 18ct gold 'Calatrava' watch, £11,500 from Timewise Vintage Watches.

P.O. Box 119
Cranbrook
Kent TN18 5WB
Telephone
01797 252030
E-mail
info@adfl.co.uk
Web
www.adfl.co.uk
Reg. no. 04293279
(England & Wales)

Other artists' work for sale includes Marcel Dyf's (French, 1899-1985) *Peonies and Godetias*, oil on canvas, £22,000 from **Burlington** and *Hill top Village in the Provence Alps, Côte d'Azur*, oil on canvas, £15,850 on **Haynes Fine Art's** stand. Mary Fedden's paintings for sale include *Bottle and Shells*, gouache, signed and dated 2008, £4,800 from **Kaye Michie Fine Art**, as well as her husband's *Kilns at Burslem*, an oil on canvas by Julian Trevelyan (1910-1988), priced at £60,000 + ARR from **Jenna Burlingham Fine Art**.

Ceramics sold well last September, which has obviously influenced **Julian Ede Antiques'** decision to return, having been a new recruit last September. **Tom Rooth Fine Art** is exhibiting again having completely sold out of his contemporary handmade, hand-finished and signed *Oceanic Collection* of tableware, bringing new designs, like *Prawnography* and *Salmon Spiral* this June, as well as fine art. **BEAR Petworth** has a pair of thirties' original mohair, velvet and brass studded *Bo-Point* armchairs by Modernist architect and designer Otto Schulz for Boet, Gothenburg, £2,950. **Diamonds4You** stands again with a pair of cabochon turquoise and diamond drop earrings set in 18 carat white gold, dating c.1920, £2,000. **Timothy Millett Ltd** also plans to exhibit his historical medals and works of art for a second time, amongst which is a scent bottle, £1,450, that commemorates the first and largest fleet action of the naval conflict between Great Britain and the French Republic during the Napoleonic wars of 1 June 1794, with the British forces commanded by Admiral Earl Howe. The Napoleonic Wars broke out in 1793 and did not go well to start with, so this extremely significant early battle was important to decide who controlled the seas. Another record of British valour can be found in twelve framed coloured aquatints by I. Porter & E. Orme depicting the Duke of Wellington's victories in the Peninsular War, with biographical details on the reverse, 1815, £485 the set, also from **Timothy Millett Ltd**.

Petworth Park regular, **Jupiter Antiques**, has a rare fine example of a very early Worcester *snake in a basket* pattern teapot and cover not normally found in such good condition, c. 1753-55. **S&J Abbott Ceramics Plus** brings a pair of Bow figures, depicting male and female gardeners, each clutching large colourful floral garlands, circa 1765, £1,250 the pair. A similar pair can be found in the Cincinnati Museum, USA. Sussex based **Fileman Antiques** is a five-generation family business specialising in antique glass. Offering a wide range from chandeliers and other lighting to drinking glasses, decanters and paperweights, **Fileman Antiques** is bringing a rare pair of Victorian red flashed globe decanters with 18 matching glasses, English, 1880, £3,000 and a fine pair of silver plated and cut glass electroliers by F&C Osler, 1900, £4,950 the pair. **M&D Moir** exhibits for a second time with an amazing Ruba Rombic Cubist topaz vase designed by Rubin Hailey and produced circa 1927-32, £1,250.

Animals are always popular and **Blackbrook Gallery** has a naïve painting *Fat Shorthorn Heifer* by William Henry Davis, an important artist recording the images of the famous prizewinning farm animals during the 19th century. WH Davis's patrons included Lord Spencer, Lord Berwick, Thomas Cope and Queen Victoria, who commissioned four paintings. Farm livestock of the time was fed to become very large, as fat was as an important commodity being used for lubrication, fuel and food for the workers leaving the land to work in the factories of the industrial revolution. Amongst the animals on the **S&J Abbott Ceramics Plus** stand is a very rare miniature, toy size, Rockingham figure of a foxhound on a pink and gilt cushion, £650.

Walton House Antiques from Mere in Wiltshire returns with a late 17th century geometric oak coffer with ebony and holly bandings, £1,675. **William Cook** always has an eclectic mix of old and contemporary desirable decorative accessories and antique furniture. Amongst the items destined for his stand in Petworth Park are a William IV gongalo alves period centre table by Gillow, c.1843, £8,800 and an elegant set of eight decorated dining chairs, 19th century, £2,850.

Hickmet Fine Arts brings a selection of sculpture, glass and other decorative pieces including an Art Nouveau slender cameo glass flower vase by Emile Gallé (1846-1904), c.1900, £2,750 and *Woman and puma* cold painted bronze lamp by Franz Xavier Bergman (1861-1936), circa 1900, £6,850. **Garret & Hurst Sculpture** offers an elegant Carrara marble bust *Jeune Femme* by Henri Weigele (French, 1858-1927), c.1895, £12,795 or for dog lovers there is *Ravageot et Ravageole, Chiens Bassets*, an animalier bronze by Emmanuel Fremiet (French, 1824-1910), c.1880, priced at £2,850.

BBC Antiques Roadshow horological expert, **Richard Price** returns with a selection of fine clocks. **Timewise Vintage Watches** is exhibiting with smaller timepieces, including an early example of the original Patek Philippe *Calatrava* model sold in June 1945, just after the end of WWII, which comes with archive papers from Patek Philippe and a period PP box, priced at £11,500. The 18ct. gold case



A fine pair of George III cut glass ormolu mounted Jasperware candlesticks, 1795, £5,600 from Fileman Antiques



'View from the 5th tee at Cowdray Golf Club' by Claude Graham Muncaster, signed, watercolour, 1927, £1,650 from Rountree Tryon Galleries



Tiffany & Co platinum, 14ct gold, sapphire and diamond set brooch, c.1920, £5,750 from Shapiro & Co



George III Cuban mahogany tallboy, £12,500 from William Cook Antiques

and the manual wind movement calibre 12-120 are in excellent condition, fitted with a PP crocodile strap and PP buckle. The first *Calatrava* model was introduced by Patek Philippe in 1932 and was made until 1973. Early examples are hard to come by and highly sought after by PP collectors.

Jewellery from differing eras is always popular and there are several jewellery dealers exhibiting with their own eclectic mix. Vintage Danish silver has gained in popularity with a number of the jewellery dealers specialising in selling pieces, particularly **Dansk Silver by Jane Burgett**. **Shapiro & Co** returns with a selection of Georg Jensen silver pieces and a Tiffany & Co platinum and 14ct. yellow gold sapphire and diamond stone set brooch, c.1920, £5,750. In the 1920s, brooches were worn on the shoulders, belts and sashes or pinned on to the fashionable cloche hats. The most typical designs consisted of an open centred circle, hexagon, square or rectangle. **T Robert** has taken part in most of **The Antiques Dealers Fair Limited's** fairs. For this June, he plans to bring an exceptional German 18 ct. five colour gold snuff box by Charles Collins & Sons, Hanau, circa 1820, priced at £9,500 and an extremely rare and fine silver gilt and amethyst Jugendstil Secessionist necklace by Gustav Hauber, handmade, signed and marked DEP (French import marks), c.1910, £2,850. **Greenstein Antiques** exhibits again, proving popular last year with people buying rings, this time bringing a seventies' fancy baguette and round brilliant diamond cocktail ring set in 18ct white gold, £8,950, as well as a Victorian amethyst and diamond pendant, £895.

The retailers in the market town of Petworth are great supporters of the event, led by the **Petworth Business Association**, as the fair brings an increased buzz to the shops and galleries, as well as hotels, restaurants, pubs and cafés over the three days. They will be throwing open their doors to welcome visitors again. Local exhibitors include **Augustus Brandt**, **Ottocento**, **BEAR Petworth**, **Petworth Antiques Market** and **Rountree Tryon Galleries**, the latter putting on a special exhibition within its Petworth gallery of recent works by Peter Symonds of Sussex and Surrey views (as well as a few of Scotland thrown in for good measure), to coincide with and encourage clients and potential customers at the fair. Many visitors to Petworth Park do head into town to see what else is on offer having shopped at the fair.

Fair organiser, Ingrid Nilson, of **The Antiques Dealers Fair Limited**, said, "Dealers are so keen to get back to work and meet their clients and other visitors that I am pleased to say that the fair is at full capacity with some 60 experts congregating in our spacious and airy marquee (and a healthy waiting list). Last year, we were fortunate enough to be granted permission to hold the fair in September by the **National Trust** and the local council, so we know how to put all the necessary safety measures in place and are supported by the enormous work and help from **Petworth Marquees** and **Cloudtree** with its architectural plants; our security team, who brought the latest technology to help ensure we held a safe event, our other supporters, the dealers and my team, all of whom loved the opportunity to be outside in the good weather interacting with each other and the public."

"We have wide one-way gangways, masks are worn and we adhere to test and trace. Our visitors were really understanding last year; some had to queue at busier times, but everyone was so happy that the fair was taking place. Basking in sunshine, it had a really jolly atmosphere. Our caterers worked hard to ensure we had socially distanced tables and chairs outside, so visitors could enjoy take-away refreshments including delicious cakes whilst overlooking the wonderful 'Capability' Brown scenery and impressive house, some also enjoying a Brilliant gin. Once again, visitors will be able to visit the mansion and its national treasures, provided they have booked in advance."

There is ample free parking for antiques fair visitors just outside the marquee and they can enjoy the fresh air and deer park. During the fair, Petworth House and the gardens will be open to visitors by pre-booking online only. For further details, please visit www.nationaltrust.org.uk/petworth **www.petworthparkfair.com**

PRESS ENQUIRIES:
Gail McGuffie PR
Telephone: 07885 10 33 53
Email: MGailMcG@aol.com

Notes to editors:

Event: The Petworth Park Antiques & Fine Art Fair



'Three Little Birds' bronze birdbath by Matt Duke and Patrick Bull, limited edition of 12, £9,950 from Art of the Imagination



Silver gilt and amethyst Jugendstil Secessionist necklace by Gustav Hauber, c.1910, £2,850 from T Robert



'Prawnography' screen print on earthenware by Tom Rooth, signed and dated, £95 from Tom Rooth Fine Art



Ruba Rombic Cubist topaz glass vase designed by Rubin Hailey, c.1927-32, £1,250 from M&D Moir

Venue: The Marquee, Petworth House and Park, Petworth, West Sussex GU28 0QY

Date: Friday 18 to Sunday 20 June 2021

Tickets & enquiries: £5, including re-admission
The Antiques Dealers Fair Ltd +44(0)1797 252030 or info@adfl.co.uk and
through Eventbrite: <https://tinyurl.com/yyuzm7qs>

Members of the National Trust are given complimentary access to the fair over the three days.

Transport: By Road: A272 Tillington Road (antiques fair entrance at New Lodges).
AA signposted to the dedicated entrance at New Lodges.

Ample free parking in the specially located antiques fair car park in Petworth Park. Pedestrian entrance via the Cricket Lodge gate.

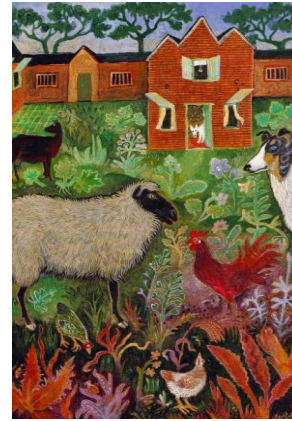
Nearest railway station: Pulborough (approx 70 minutes from London Victoria)

Nearest airports: Gatwick (approx 50 minutes), Heathrow and Southampton airports (approx 1 hour).

Charity: Queen Elizabeth Scholarship Trust (QEST) (charity no. 1152032)
www.qest.org.uk

Social Media: Twitter & Instagram: @ADFLfairs, Facebook: @AntiquesDealersFairLtd

Website: www.petworthparkfair.com



'Red Rooster' (detail) by Anna Pugh, acrylic on board, 2019, £14,500 from Lucy B Campbell Gallery



Scent bottle commemorating the Glorious First of June (1 June 1794), £1,450 from Timothy Millett Ltd



'Petworth Park' by Michael John Hunt, acrylic on canvas, 26" x 60", signed, £15,000 from The Hunt Gallery



Pair of Austrian red 'Gothic-form' no. 38 steam bent beech side chairs by Thonet, steam bent beech, c.1880, £2,600 from BEAR Petworth