

THE PETWORTH PARK ANTIQUES & FINE ART FAIR
Friday 11 - Sunday 13 May 2018



'Approaching Storm' by Charles Napier Hemy RA (1841-1917), oil on paper on board, signed and dated 1896, 24" x 36", £16,000 from The Canon Gallery

For the fourth year in a row, **The Antiques Dealers Fair Limited** is hoisting The Marquee, in the impressive Lancelot 'Capability' Brown designed grounds surrounding the magnificent Petworth House in Petworth, West Sussex, ready for the 48 exhibitors to fill it with the finest and most diverse selection of quality treasures for interiors and other irresistible items. **The Petworth Park Antiques & Fine Art Fair** takes place from Friday 11 to Sunday 13 May 2018. This event boasts a great relationship with the market town of Petworth, home to a number of antiques and fine art businesses, and the National Trust, which runs Petworth House and Park, all of whom will be putting out the proverbial welcome mat for the fair.

As well as traditional and country furniture, lighting, glass, jewellery, Tunbridge ware, clocks, silver, ceramics, vintage watches, the fair combines a wide variety of both contemporary and antique art, from sculptures to oil paintings, original illustrations and watercolours. The exhibitors are mainly members of the UK's two leading professional associations - BADA and LAPADA The Association of Art & Antiques Dealers.

Ingrid Nilson, director of **The Antiques Dealers Fair Limited**, said, "Our Petworth Park event has been full from the start and this year is no different. As usual, we are working closely with the town, via the Petworth Business Association (PBA) and Petworth Antiques And Decorative Arts association (PAADA) which is home to a number of art and antiques dealers, many of whom will be putting on a special exhibition timed to coincide with the fair. We are continuing to give National Trust members free access to the fair and the National Trust generously offers antiques fair ticket holders complimentary entry to the Park and House, over the three days, where they can see a number of the nation's impressive treasures including works by Turner, Reynolds and Chippendale."

Joining the regular exhibitors at this year's fair are a number of newcomers bringing fresh ideas for the international visitors, who range from interior designers to collectors and discerning individuals seeking something unique. **Art of the Imagination** specialises in original book illustrations and contemporary sculpture, as well as producing their own

Cont'd...

**THE
ANTIQUES
DEALERS
FAIR
LIMITED**

The Petworth Park
Antiques & Fine Art Fair

11 - 13 May 2018



Victorian sapphire and diamond
bug brooch, English,
c.1880, £8,500 from
Flaxman Fine Jewellery



Pair of Victorian ormolu
mounted satinwood and
amaranth dot & trellis
parquetry tables, attributed
to Donald Ross, English, c.1870,
£18,500 from Tim Saltwell

P.O. Box 119
Cranbrook
Kent TN18 5WB

Telephone
01797 252030
E-mail
info@adfl.co.uk
Web
www.adfl.co.uk

Reg. no. 04293279
(England & Wales)

limited edition books through its publishing arm - Books Illustrated. 19th century naive animal art is **Blackbrook Gallery's** speciality. Combining their two passions, the gallery is owned and run by John and Pat Stanley, well-respected and award winning breeders of pedigree English Longhorn cattle in Leicestershire. Other first time exhibitors include experts in 18th to 20th century ceramics, prints, silver and small collectables **S&J Abbott Ceramics Plus**, dealers in English and European late 19th century and 20th century decorative arts **Titus Omega** and **Flaxman Fine Jewellery**. Another newcomer is dealer in fine period British furniture and fine English clocks with a large selection of 19th, 20th and contemporary paintings **Millington Adams**, as well as floral jewellery expert from Antwerp **Precious Flora**, **Roger Lamb Antiques & Works of Art**, and Art Nouveau and Art Deco sculpture and glass as well as Arts and Crafts specialist **Solo Antiques**. Distinctive and desirable fine art paintings, with an emphasis on the best established Scottish artists, are on the **Flying Colours Gallery** stand.



'Bird Ark' by Anna Pugh, 2017, acrylic on board, POA from Lucy B Campbell Gallery

Art at this year's fair comes in many different guises with *Portrait of a bewigged Gentleman* by John Clostermen (1660-1711), which bears a striking resemblance to Samuel Pepys. Closterman is known to have painted or attempted to paint the diarist, who was notoriously fussy about his appearance and turned many down. This oil on canvas has a ticket price of £28,000 from **The Canon Gallery**. **Lucy B Campbell Gallery** is devoting the whole stand to the work of Anna Pugh, one of England's leading folk artists who lives in West Sussex and whose paintings are collected all over the world. Having just reached the great age of 80 years, she is allowing her first solo exhibition and this honour is taking place at the Petworth Park fair. A highlight on **Ottocento's** stand is a set of five woodcut prints by Edward Burra (British, 1905-1976), £4,500 the set, which was printed in 1971 by Nicolas Treadwell Gallery (the original edition was from 1928-1929). **Art of the Imagination's** original book illustrations and sculptures including a 3'6" bronze of *Mister Toad* by Rachel Talbot, which coincides with the publication of *Wind In The Willows* with illustrations by Angel Dominguez. **Cambridge Fine Art** concentrates mainly on the work of British Victorian artists of repute. One watercolour on the stand is *Waiting by the Stile* by Sheffield artist Charles Edward Wilson (1854-1941), who settled in Godalming in Surrey.



George II bell shaped mug, c.1759-60, £1,095 and King of Prussia bell shaped mug, dated 1757, £695 from Jupiter Antiques

The Hunt Gallery specialises in the work of the English figurative painter and etcher, Michael John Hunt, who will be at the fair to discuss his topographical paintings, landscapes and evocative interiors with interested visitors. Local exhibitor **Moncrieff-Bray Gallery** returns, previewing some of the artists' paintings and sculpture that will be for sale in the art exhibition opening at the Gallery later in May. Amongst the contemporary sculpture and paintings for sale are oils by Stephen Palmer, two of which are *Copse*, *Petworth Park*, £1,650 and nearby *Chanctonbury Ring*, £1,300 and further afield is *Winter Cove, Cornwall* by Hannah Woodman in graphite, oil, watercolour and gesso on paper, £2,200.



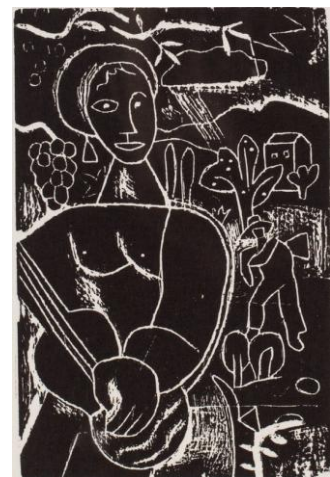
19th century gouache on mica, India, c.1870, £550 from Roger Lamb Antiques & Works of Art

Fileman Antiques brings all things glass - from a Baccarat butterfly over clematis paperweight, £2,000 to an elaborately cut pair of Regency lustres, c.1820, £1,750 and a fine six light cut glass ormolu mounted chandelier, attributed to John Blades, c.1825, £8,500. **Mark J West** also has a wide selection from drinking glasses to vases. In keeping with the recent buying trend for Art Nouveau items **Hickmet Fine Arts** is bringing an early 20th century glass cream jug, etched and enamelled with a purple floral decoration against a white field, signed Daum Nancy and with the Cross of Lorraine, c.1900, £2,850.



Baccarat butterfly over clematis paperweight, French, £2,500 from Fileman Antiques

With vintage watches proving popular last year, **Timewise** is returning with another impressive selection, amongst which is a gentleman's Rolex watch in a solid 18 carat gold case with rare engine turned bezel and dark brown alligator strap, c.1952, £6,800. A plethora of jewellery from a number of jewellery specialists includes a silver and gold tremblant flower brooch comprising rose diamonds and a central old cut diamond, c.1840, £4,000 and a late 20th century woodcock or snipe brooch by Georges L'Enfant for Hermès, £8,500 from **Markov**. In **Precious Flora's** plant nursery there is a great variety



'Guitar Player' one of a set of 5 woodcut prints by Edward Burra, £4,500 the set from Ottocento

Cont'd...

of different pieces of jewellery, cleverly growing out of small terracotta plant pots. One highlight is *Syringa vulgaris* (lilac), a clip brooch signed by the king of jewellers, Cartier, comprising blue Montana sapphires and pink sapphires set in gold, c.1945, £10,600.



Black Starr & Frost enamel, diamond, gold & platinum rose brooch c.1890, £2,450 from Precious Flora

Television antiques personalities exhibiting include Antiques Roadshow clock expert **Richard Price** with his impressive stock of French and other European clocks that are not only functional but decorative, and Mike Melody. **Melody Antiques** has a late 17th century walnut escritoire with inlay, c.1690, £8,995. Other returning furniture dealers include **Guy Denner Antiques & Interiors** with good quality Georgian pieces, **Hugh Leuchars** who virtually sold all the pieces of furniture on his stand last year, **Tim Saltwell** with a Hepplewhite period yew wood cylinder bureau, English, c.1785, £10,950 and Petworth based **Augustus Brandt** with a rare Regency gilt mounted occasional table with painted top, c.1790-1810, £2,750.

With the royal wedding the weekend after the fair, dealers are bringing some regal pieces, including King of Prussia (£695) and King George II bell shaped mugs (£1,095) on **Jupiter Antiques'** stand. The Antiques Dealers Fair Limited is continuing its alliance with the Royal Warrant Holders Association's charitable arm, the **Queen Elizabeth Scholarship Trust (QUEST)**.



Art Nouveau glass cream jug, signed Daum Nancy, French, c.1900, £2,850 from Hickmet Fine Arts

Tickets to the fair cost £10 each on the door or in advance through Eventbrite. Light refreshments are available within the fair or visitors can take advantage of the many restaurants and cafés in Petworth itself. A courtesy shuttle runs between the antiques fair and the town of Petworth. Parking is free for antiques fair visitors. AA signposted to the dedicated entrance at New Lodges.

PRESS INFORMATION & JPEG IMAGES AVAILABLE FROM:

Gail McGuffie PR or IONA PR
 T: +44 (0)7885 10 33 53 T: +44 (0)7721 030 825
 E: MGailMcG@aol.com E: iona@ionapr.com



18ct gold snipe or woodcock brooch with ruby eyes, c.1980s, £8,500 from Markov

Notes to editors:

The fair is vetted with a dateline of 1970 for most disciplines, one exception being contemporary fine art.

- Event:** The Petworth Park Antiques & Fine Art Fair
- Supporters:** National Trust, Savills, Anderson Rowntree Solicitors, Bold & Reeves, PAADA and the PBA.
- Venue:** The Marquee, Petworth House & Park, Petworth, West Sussex GU28 0QY
- Date:** Friday 11 - Sunday 13 May 2018
- Opening Times:** Friday 11am-8pm, Saturday 10.30am-6pm, Sunday 10.30am-5pm
- Tickets & enquiries:** *£10 including catalogue (and re-admission)
 The Antiques Dealers Fair Ltd +44(0)1797 252030 or info@adfl.co.uk and through Eventbrite
 *Tickets include complimentary access to Petworth House and Park over the three days. Free entry to the antiques fair for National Trust members
- Transport:** By Road: A272 Tillington Road (antiques fair entrance at New Lodges). Pedestrian entrance through the main entrance of Petworth House. Ample free parking in the specially located antiques fair car park in Petworth Park. AA signposted to the dedicated entrance at New Lodges. Courtesy shuttle bus to/from Petworth town.



Art Nouveau 'The Lovers' by Carl Kauba, bronze on marble base, signed, Austrian, c.1900, £2,750 from Solo Antiques



Set of Regency mahogany wall shelves with brass X supports, c. 1820, £975 from Wilsons Antiques

Nearest railway station: Pulborough (approx 70 minutes from London)

Cont'd...

Victoria)

Nearest airports: Gatwick (approx 50 minutes), Heathrow and Southampton airports (approx 1 hour)

Charity: Queen Elizabeth Scholarship Trust (QEST) (charity no. 1152032)
www.qest.org.uk

Social Media: Twitter: @ADFL fairs, Facebook: AntiquesDealersFairLtd/, 新浪微博

Website: www.petworthparkfair.com



**A porcelain mantel timepiece
signed Copeland china,
T. Goode & Co, £2,850 from
Richard Price**

March 2018