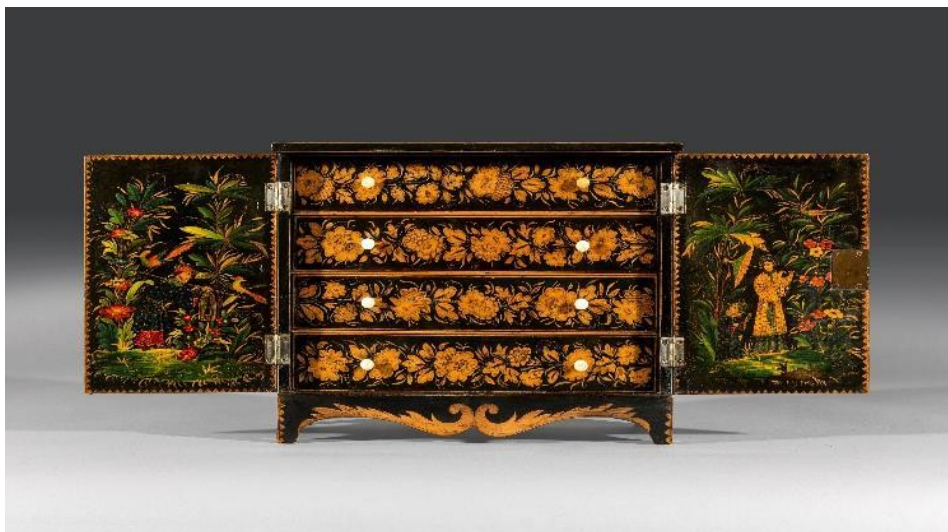


**THE PETWORTH PARK ANTIQUES & FINE ART FAIR  
RETURNS THIS MAY  
Friday 19 to Sunday 21 May 2023**

**THE  
ANTIQUES  
DEALERS  
FAIR  
LIMITED**



Regency Chinoiserie table cabinet, 28.50cm (11.22") high x 32cm (12.60") wide x 17cm (6.69") deep, circa 1820, £6,750 from Freshfords Fine Antiques



'Wildflower Wood' by Ivon Hitchens, oil on canvas, £175,000 from Gladwell & Patterson

The ninth annual **Petworth Park Antiques & Fine Art Fair** opens on **Friday 19 until Sunday 21 May** this year, when some 60 dealers with their latest acquisitions, put on a magnificent display for the fair's discerning visitors. Housed in a specially designed marquee erected in the grounds of the National Trust's Petworth House in Petworth, West Sussex, antiques fair tickets enable visitors to park directly outside the marquee and also visit Petworth House to view some of the nation's art collection free-of-charge over the three days.



Victorian seed pearl and 18ct gold cameo brooch, £3,950 from Greenstein Antiques

Appealing to collectors, interior designers and those who enjoy surrounding themselves with rare and fine items, this event offers a vast array of unique and impressive items to decorate interiors and as unusual gifts. This year's fair welcomes a few new exhibitors: **Gladwell & Patterson** fine art dealers from Knightsbridge in London bringing *Wildflower Wood* oil on canvas signed by Ivon Hitchens (British, 1893-1979), 1975, priced at £175,000. The door to Hitchens' Petworth studio is revealed in the far left of the composition; **Andrew Muir** and **James Miles Ltd**, exhibiting their Art Deco and mid-century ceramics together; **Brian Watson Antique Glass**; **Lesley Blackford Antiques** with an eclectic mix, **S&S Timms Antiques Ltd** bringing 17th to 19th century town and country furniture for the home; **Jacksons Antique** with 19th century objects and Asian art, and **W. Shanshan 珊然軒** with ancient Asian pottery to more contemporary ceramics from China, Korea, Japan and elsewhere.



Tang dynasty (618-907 CE) earthenware female polo player, £2,300 from W. Shanshan 珊然軒

Highlights at the fair include a large Chinese porcelain plate decorated in vibrant *famille rose (fencai)* palette enamels in the centre with two Mandarin ducks swimming amongst lotus and on the border with eight Taoist immortals on their mythical attributes riding the fierce waters, c. 1740, Qianlong reign, Qing dynasty from **Santos London**. On the back is a red wax seal with the name DUVEEN, LIVERPOOL. From **Freshfords Fine Antiques**, returning to exhibit

P.O. Box 119  
Cranbrook  
Kent TN18 5WB  
Telephone  
01797 252030  
E-mail  
info@adfl.co.uk  
Web  
www.adfl.co.uk  
Reg. no. 04293279  
(England & Wales)

after a few years, comes a Regency Chinoiserie table cabinet, circa 1820, £6,750; a sizeable grand late Regency George IV period carved convex mirror, circa 1820, £14,500 and a rare early 19th century Gillow's Regency period rosewood open bookcase cabinet, circa 1820, £12,500. Other furniture for sale includes an elegant pair of late 19th century satin birch Hepplewhite shield back armchairs on tapered legs, £1,800 from **Walton House Antiques** and an important George III console table with the original marble top, £10,500 from **William Cook**. Campaign furniture for sale includes an early 19th century oak Regency naval chair made to fold quickly to clear the decks, priced in the region of £1,250 and an early to mid-19th century ship's oak narrow chest with gallery and removable turned feet on lugs, also £1,250 from **Christopher Clarke Antiques**.

Equestrian art is particularly relevant with Cowdray Park Polo Club a few miles down the road. Petworth based exhibitor **Augustus Brandt** has a bronze of a polo player by Joseph Cuvelier (French 1833-1879), cast by H. Luppens & Cie, circa 1860, £4,650. Another polo player, this time a Chinese Tang dynasty (618-907 CE) earthenware female polo player, priced at £2,300 is with **W. Shanshan 珊然軒**. At that time, women in China were able to walk freely in society, serve as officials and play polo in groups. **Burlington** brings *Point to Point Enclosure* an oil on canvas signed by Paul Gribble (b.1938), £4,500 and **The Swan Gallery** has *Ploughing Horses at Work*, an oil on canvas signed by Harry Fidler, RI RBA (fl.1891- d.1935), £2,950. Local dealer **Antiquated**, who can usually be found in the Petworth Antiques Market, has a 19th century small iron horse weathervane, circa 1840, £380. A late 19th century equestrian clock by Japy Frères of Beaucourt, France, can be found on the stand of **Hatchwell Antiques** with an asking price of £2,600. The clock is themed with various equestrian tack, including a horseshoe, stirrup, bit, bridle, chain, buckles and spur. Jewellery specialist **Shapiro & Co** returns with a selection of equine inspired nine carat gold pendants/charms dating from the 1950s, including a horse's head, £275, a racehorse, £375 and a pixie in a horseshoe, £425.

New exhibitor **Mark Goodger Antiques** has one of René Lalique's most famous designs - a car mascot 'Longchamp A', model number 1152A, with a double mane and a slight amethyst tint, circa 1929, £9,750 for the front of vehicle with horse power, and a very rare glass decanter with a sterling silver collar and a faceted stopper by silversmith Hukin & Heath featuring an enamelled horse and hound scene, circa 1937, £1,400.

Glass and ceramics abound with local five generation glass specialist **Fileman Antiques** showing all things glass from paperweights and drinking glasses to chandeliers, including a fine pair of Rockingham porcelain candlesticks with gilt decoration, hung with the most unusual spade drops and notch cut spangles, English, c.1830, £4,850. Exhibiting for the first time is **Brian Watson Antique Glass** with a pair of finely cut early 19th century French vases on classical bronze bases, probably made by Baccarat, circa 1820-30, £1,950 and an amethyst-coloured vase with an engraved and gilded Bacchanalian scene, designed by Josef Hoffmann for Moser, circa 1920, £565. **M&D Moir** is coming with a signed Emile Gallé deeply cut cameo *Primula* vase, c.1908, £2,950; a rare Fachschule



Portrait of H.M. King George VI by Herbert James Gunn R.A., oil on canvas, £18,000 from Rountree Tryon Galleries



Pair of finely cut early 19th century French vases, probably Baccarat, c.1820-30, £1,950 from Brian Watson Antique Glass



Faberge miniature enamel, gold and silver egg pendant by workmaster Andrei Adler, St. Petersburg, c.1900, £3,250 from Shapiro & Co



'The Glory of Spring' by Cecil Kennedy, oil on canvas, £28,000 from Burlington



Haida vase with polychrome parrots, c.1915, £1,980 and an L.C. Tiffany Favrile vase, signed, c.1905, £2,200. More glass can be found with **Mark J. West** too.

**Hickmet Fine Arts** and **Morgan Strickland Decorative Arts** return with their respective 19th to mid-20th century glass, ceramics and sculpture. **Tom Rooth** exhibits art and his own hand drawn ceramic designs, amongst which is *Octopus* framed in an early 20th century ship's porthole, £3,350. **Drove House Antiques** returns to the fair after a few years bringing a Chinese export famille rose candlestick, modelled after a European silver form, dating from the Qianlong period, circa 1740-60, £850 and a finely-detailed Copeland Parian figure group of *Florence Nightingale and the Wounded Soldier* from second half of the 19th century, £475.

In the month that the United Kingdom and the Commonwealth celebrates the coronation of our new King, a few dealers are exhibiting royal items including a portrait of the last king to reign, King Charles III's grandfather *King George VI* by Herbert James Gunn R.A. (1893-1964), oil on canvas, £18,000 from Petworth and St. James's art dealer **Rountree Tryon Galleries**. Another Petworth gallery, **Ottocento** brings a painting of Amalie Sophia von Wendt holding the Golden Apple in the Judgment of Paris flanked by her sisters. She went on to be George II's mistress and fathered a son by him. She was the last mistress to be given a peerage. From **The Antique Enamel Company** comes a silver and enamel Coronation coach by Ludwig Politzer, Vienna, circa 1890, £6,250; several Bilston enamel patch boxes, circa 1780, featuring royal palaces and castles, including Windsor Castle, and a Battersea York House enamel box commemorating the marriage of King George III and Queen Charlotte, circa 1755, priced at £8,000. The lid is printed with a portrait of George II to the exterior and portrait Queen Charlotte to interior, the sides with vignettes of Neptune, Britannia, cherubs etc and with a poem beneath "Let him love now, who never lov'd before / Let him who ever lov'd, now love the more". A near identical example is in the Royal Collection. **Mark Goodger Antiques** brings a rare solid oak tea caddy in the form of a sentry box, which could have been guarding King George V as it dates circa 1890, £2,950; adorned with a detailed watercolour painting of a Grenadier Guard standing inside the sentry box behind a glazed window. The peaked roof lifts to reveal a tea storage compartment with a floating lid to help keep the tea leaves fresh. This compartment has traces of its original lining.

There is so much more to discover with art to satisfy most tastes. **Blackbrook Gallery** sells naïve animal paintings amongst which is an oil on canvas *Proud Farmer with his prize Hereford Steer and Cotswold Ram* signed by L. Beattie and dated 1833, with a price tag of £14,950. This is a rare painting showing the farmer dressed in his smartest smock, hat and boots. A highlight on Petworth Park fair newcomer **John Adams Fine Art's** stand is *Le Pavillon de Chasse* (The Hunting Lodge) an oil on canvas by French artists Claude Gasparrin (1936-1977), £24,000 and a characterful gouache *Réunion des Modistes* by Léon Benigni (French, 1892-1948), £4,400. **Kaye Michie Fine Art** brings an impressive



'Réunion des Modistes' by Léon Benigni, gouache, £4,400 from John Adams Fine Art



Early to mid-19th century ship's oak narrow chest with removable turned feet on lugs, £1,250 from Christopher Clarke Antiques



Polo player bronze by Joseph Couvelier, cast by H. Luppens & Cie, c.1860, £6,850 from Augustus Brandt



Map of 'Hampshire' by C. Saxton, corrected and many additions by P. Lea (amendment using the original Saxton plate of 1579), 1720, £2,400 from The Swan Gallery

selection including paintings by Donald Hamilton Fraser RA (1929-2009) and Mary Fedden RA OBE (1915-2012). **Lucy B. Campbell** is showing work by popular Sussex artist Anna Pugh (b.1938). Artists inspired by Sussex landscapes and subjects come from **Elford Fine Art** with and oil on board of *Arundel Castle* by Sarah Louisa Kilpack (British,1839-1909), £950 and *Sunset after Rain Hastings, Sussex* a watercolour by Frank Rouse (exhibited 1897-1917), £795. Another Sussex inspiration appears on **Rountree Tryon Galleries'** stand *View from Upperton towards Chanctonbury Ring, West Sussex* signed oil on board by Claude Graham Muncaster (1903-1974), priced at £5,500. **Garret & Hurst Sculpture** exhibits contemporary and 19th century bronzes with a highlight being 'Le Penseur' by Julien Monier (French, fl. 1890-1915), £5,975.



Silver and enamel Coronation coach by Ludwig Politzer, Vienna, c.1890, £6,250 from The Antique Enamel Company

Jewellery highlights include Georg Jensen silver grape vine leaf necklace, no 96, designed by Harald Nielsen, 47cm long, early 1920s, £1,750 from **Dansk Silver by Jane Burgett**. Harald Nielsen was the younger brother of Georg Jensen's wife, Johanne. He worked for the company as an apprentice in 1909 and worked his way up to become the smithy director after Georg Jensen's death. In previous years, **Greenstein Antiques** has sold several engagement rings to visitors at the Petworth Park fair and there is a varied selection once again, as well as an impressive Austrian Art Deco diamond bracelet £12,950 and a Victorian seed pearl and 18ct yellow gold cameo brooch, £3,950.



L. C. Tiffany Favrite vase, signed, c.1905, £2,200 from M&D Moir

**The Antiques Dealers Fair Limited** organiser, Ingrid Nilson said, "Our Petworth Park Fair is in an enviable position in that we have had a waiting list of exhibitors for a number of years now. With the sad demise of several fairs since the pandemic, we now have an even greater choice of dealers wishing to exhibit, so can offer visitors a really varied variety of specialisms from the ancient to the contemporary."



Irish Regency period satin birch inlaid sofa table, c.1810, £7,850 from Freshfords Fine Antiques

A complimentary minibus regularly ferries people between the centre of Petworth and the antiques fair, so they can take full advantage of all that the market town of Petworth has to offer. Petworth has a remarkable range of art and antiques shops and galleries, as well as plenty of pubs and eateries. Tickets are £10 each and can be booked at <https://PetworthParkFair.eventbrite.co.uk> Tickets include complimentary access to Petworth House and Park over the three days. Free entry to the antiques fair for National Trust members. See [www.petworthparkfair.com](http://www.petworthparkfair.com) for more information.



Copeland Parian figure group of 'Florence Nightingale and the Wounded Soldier', second half of 19th century, £475 from Drove House Antiques

PRESS ENQUIRIES:

Gail McGuffie PR  
Telephone: +44 (0)7885 10 33 53  
Email: MGailMcG@aol.com

## Notes to editors:

All items for sale at this fair are vetted for quality and authenticity. The majority of the exhibitors are members of the UK's two professional associations: The British Antique Dealers' Association or LAPADA The Association of Art & Antiques Dealers.

The fair raises funds for the **Queen Elizabeth Scholarship Trust** and is supported by the **National Trust, Brilliant Gin, Hennings Wine, Glanvilles Solicitors, Kirker Holidays, Petworth Antiques And Decorative Arts association, Petworth Marquees and Petworth Business Association.**

**Event:** The Petworth Park Antiques & Fine Art Fair

**Venue:** The Marquee, Petworth House and Park, Petworth, West Sussex GU28 0QY

**Dates:** Friday 19 to Sunday 21 May 2023

**Opening Times:** Friday 11.00 to 18.00, Saturday 10.30 to 18.00, Sunday 10.30 to 17.00

**Tickets & Enquiries:** \*£10 including catalogue (and re-admission) through Eventbrite <https://PetworthParkFair.eventbrite.co.uk>  
\*Tickets include complimentary access to Petworth House and Park over the three days. Free entry to the antiques fair for National Trust members.  
The Antiques Dealers Fair Ltd +44(0)1797 252030 or [info@adfl.co.uk](mailto:info@adfl.co.uk)

**Transport:** By Road: A272 Tillington Road (antiques fair entrance at New Lodges). AA signposted to the dedicated entrance at New Lodges. Ample free parking in the specially located antiques fair car park in Petworth Park. Pedestrian entrances via the Cowyard and the Cricket Lodge gate. Courtesy shuttle bus to/from Petworth town.

Nearest railway station: Pulborough (approx 70 minutes from London Victoria)

Nearest airports: Gatwick (approx 50 minutes), Heathrow and Southampton airports (approx 1 hour).

**Charity:** Queen Elizabeth Scholarship Trust (QUEST) (charity no. 1152032) [www.quest.org.uk](http://www.quest.org.uk)

**Social Media:** Facebook: @AntiquesDealersFairLtd, Instagram: @adflfairs  
Twitter: @ADFLfairs

**Website:** [www.petworthparkfair.com](http://www.petworthparkfair.com)



Large Chinese porcelain plate decorated in vibrant *famille rose* (*fencai*) palette enamels c.1740, Qianlong reign, Qing dynasty, POA from Santos London



Late 19th century equestrian clock by Japy Frères of Beaucourt, France, £2,600 from Hatchwell Antiques



'Arundel Castle' by Sarah Louisa Kilpack, oil on board, £950 from Elford Fine Art