

THE PETWORTH PARK ANTIQUES & FINE ART FAIR IS BACK!
Friday 11 to Sunday 13 September 2020



'Lord Wodehouse stopping a rush: The 1921 Westchester Cup between USA and England at the Hurlingham Club, London' by Lionel Dalhousie Robertson Edwards, R.I., R.C.A. (1878-1966), pen and ink, 7½ x 14 in. (19 x 35.5 cm), 1921, £3,250 from Rountree Tryon Galleries

The rescheduled annual **Petworth Park Antiques & Fine Art Fair** is due to return to the grounds of the National Trust's Petworth House this autumn. Organised by **The Antiques Dealers Fair Limited** for the sixth successive year, this much loved fair opens in The Marquee, Petworth Park, Petworth, West Sussex GU28 0QY from **Friday 11 to Sunday 13 September 2020** and is now firmly established as part of Petworth's social diary. Visitors are advised to check online at www.petworthparkfair.com for latest updates before travelling.

Fair organiser, Ingrid Nilson said, "We are adhering to the government's guidelines for the safety of all. There are some changes to the usual layout, which won't detract from viewing the magnificent selection of fine art and antiques. There will be a track and trace system in place; allowances for social distancing; the wearing of face coverings will be mandatory inside the marquee and there will be hand sanitisers for everyone's use. Some queuing will be inevitable and a one-way system may operate within the fair at busier times. The catering has been brought outside to the front of the marquee, so visitors can relax, if they wish, whilst awaiting their turn to enter the marquee."

None of the alterations will detract from the fair retaining its reputation for being an exciting day out for interior design enthusiasts, collectors and visitors who enjoy the finer things in life. Visitors will be greeted by an enthusiastic band of antique dealers glad to be back interacting with the public and showing an array of enticing antiques and fine art, all for sale from a few hundred pounds upwards.

The fair features some 50 specialist exhibitors selling fine period furniture, clocks, jewellery, silver, oil and watercolour paintings, sculpture, glass, lighting, ceramics, 20th century design objects, vintage watches, historical medals, garden statuary and many other decorative works of art. New faces include **Julian Eade Antiques, Burlington, Kenneth Neame Limited, Michael St. John, Shapero Gallery, Timothy Millett Limited, Ellis Fine Art** and **Tom Rooth Fine Art**.

Some highlights from this year's new exhibitors include an interesting range of Victorian paintings, with a couple of local scenes by Edward Wilkins Waite RBA (1854-1924): *Haymaking in Sussex*, £16,000 and *Cornfields at Fittleworth*, £12,000 from **Burlington**. **Shapero Gallery** has a handsome portrait of former banker and Member of Parliament *Edward Charles Grenfell, 1st Baron St Just* by royal portraitist Sir Oswald Birley MC RA (1880-1952), £37,000. **Tom Rooth Fine Art** has cleverly sourced the work of local artist

**THE
ANTIQUES
DEALERS
FAIR
LIMITED**

The Petworth Park
Antiques & Fine Art Fair

11 - 13 September 2020



A fine pair of early Victorian amethyst cornucopia candlesticks, 1840, £3,950 from Fileman Antiques



A George I walnut bachelor chest, c.1729, £25,900 from Millington Adams

P.O. Box 119
Cranbrook
Kent TN18 5WB
Telephone
01797 252030
E-mail
info@adfl.co.uk
Web
www.adfl.co.uk
Reg. no. 04293279
(England & Wales)

Sue Viner, who lives outside Chichester. She creates the most exquisite botanical studies of flowers, vegetables, fruit, shells and feathers brimming with subtle textures and vivid colours using materials sourced from the earth. A fascinating area of collectibles is historical medals, enabling people to follow history through objects or a theme that ties in with their particular interest. **Timothy Millett Limited** is probably the leading specialist in this area and the stand is a treasure trove of yesteryear. Examples include a William Gladstone caricature pipe, c.1880, £385 and an enamel box, c.1783 of Wooburn Farm, Addlestone, Surrey, which was the seat of Lord Petre, £650.

An observation is that having spent so much time in their homes during lockdown, the buying public has decided to feather their nests. Moreover, with interest rates flatlining at the bank and limited returns on deposited money, people are taking a “why the hell not” approach to purchasing antiques and fine art, which they can enjoy. Similarly, having been restricted to online selling for the many months, the dealers are keen to be back in business and are going to great lengths to dress their stands with a selection of tempting and impressive stock from a wide range of eras.

Highlights of every discipline are to be found around the fair including a great choice in paintings from contemporary work at **Lucy B Campbell Gallery** and **Tom Rooth Fine Art**, mid-20th century artists from **Freya Mitton** and Victorian artists from **Cambridge Fine Art** amongst others. In keeping with the beginning of the new season, **Freya Mitton** has a charming painting of an *Autumn Day* by Fred Yates (1922-2008), £5,800. Returning Petworth exhibitors include art dealers **Ottocento** and **Rountree Tryon Galleries**, with further stock in the galleries a short distance away in the market town itself. First time Petworth based exhibitor **Chequers Antiques** is well known for its stock of silver, glassware, furniture, china and paintings.

The fair hosts an eclectic mix of dealers offering a wide selection of some of the best decorative arts. Stand-out pieces include a very rare pair of 1940's Mouseman bookends with squirrels holding an acorn from **Ptarmigan Antiques**, a miniature Spode teapot and cover, c.1820, from **Jupiter Antiques**, or a French lyre mantel clock, c.1900, £2,850 from **Richard Price**, the well-known clock expert from BBC Antiques Roadshow. To celebrate an anniversary or as a gift or just to add a bit of sparkle, there is an excellent mixture of jewellery dealers showing antique and modern pieces.

As the Goodwood Revival is no longer taking place on the same dates nearby, the fair organisers are encouraging visitors to come along in their vintage cars, dressed for the occasion, on the Sunday, the final day of the fair, if they wish. Obviously, this will be weather permitting for the open top vehicles!

There is ample free parking for antiques fair visitors just outside the marquee and they can enjoy the fresh air and Lancelot 'Capability' Brown designed 700 acre deer park. Petworth House and the gardens are open to visitors by pre-booking online only. For further details, please visit www.nationaltrust.org.uk/petworth

The fair raises funds for the **Queen Elizabeth Scholarship Trust** and is supported by the **National Trust**, **Brilliant Gin**, **Hennings Wine**, **Anderson Rowntree Solicitors**, **First Class Holidays**, **Petworth Antiques And Decorative Arts association**, **Petworth Marquees** and **Petworth Business Association**.

PRESS INFORMATION & JPEG IMAGES AVAILABLE FROM:

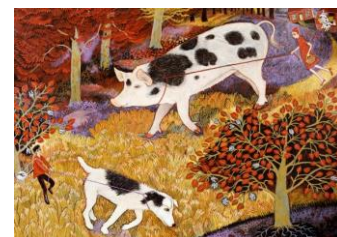
Gail McGuffie PR
T: +44 (0)7885 10 33 53
E: MGailMcG@aol.com

or

IONA PR
T: +44 (0)7721 030 825
E: iona@ionapr.com



Portrait of Edward Charles Grenfell, 1st Baron St Just by Sir Oswald Birley, oil on canvas, 1922, £37,000 from Shapero Gallery



'Truffling' by Anna Pugh, acrylic on board, 2020, £14,500 from Lucy B Campbell Gallery



Imari pattern Flight, Barr & Barr plate, c.1815, £250 from Duveen Art & Antiques



Framed WWI patriotic silk handkerchief depicting the national anthems of Great Britain, France, the late Russian Empire and Belgium, c.1914, £425 from Timothy Millett Limited

Cont'd...

Notes to editors:

All items for sale at this fair are vetted for quality and authenticity. The majority of the exhibitors are members of the UK's two professional associations: **The British Antique Dealers' Association** or **LAPADA The Association of Art & Antiques Dealers**.

Event: The Petworth Park Antiques & Fine Art Fair
Date: Friday 11 - Sunday 13 September 2020
Venue: The Marquee, Petworth House and Park, Petworth, West Sussex GU28 0QY

Opening Times: Friday 11am-6pm, Saturday 10.30am-6pm, Sunday 10.30am-5pm

Tickets & enquiries: £5, including re-admission
The Antiques Dealers Fair Ltd +44(0)1797 252030 or
info@adfl.co.uk and through Eventbrite
<https://tinyurl.com/ty4kd3g>

Members of the National Trust are given complimentary access to the fair over the three days.

Transport: By Road: A272 Tillington Road (antiques fair entrance at New Lodges). AA signposted to the dedicated entrance at New Lodges.

Ample free parking in the specially located antiques fair car park in Petworth Park. Pedestrian entrance via the Cricket Lodge gate.

Nearest railway station: Pulborough (approx 70 minutes from London Victoria)

Nearest airports: Gatwick (approx 50 minutes), Heathrow and Southampton airports (approx 1 hour)

Charity: Queen Elizabeth Scholarship Trust (QEST)
(charity no. 1152032) www.qest.org.uk

Social Media: Twitter & Instagram: @ADFLfairs,
Facebook: @AntiquesDealersFairLtd

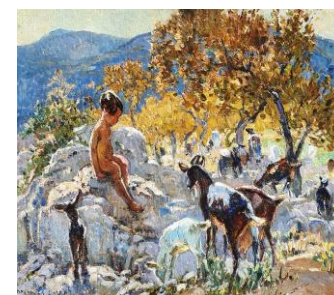
Website: www.petworthparkfair.com



A rare pair of Mouseman squirrel bookends, 1940/50s from Ptarmigan Antiques



18ct gold necklace depicting ivy leaves, French, 1890-1900, euros 1,150 from Precious Flora



Dorothea Sharp, ROI, RBA, PSWA (1874-1955): 'Playful Companions' by Dorothea Sharp, oil on canvas, guide price £40,000 - £50,000 from Haynes Fine Art - London & Cotswolds



Russian silver gilt enamel casket by the 6th Moscow Artel, hallmarked Moscow 1908-1917, £9,750 from Shapiro & Co