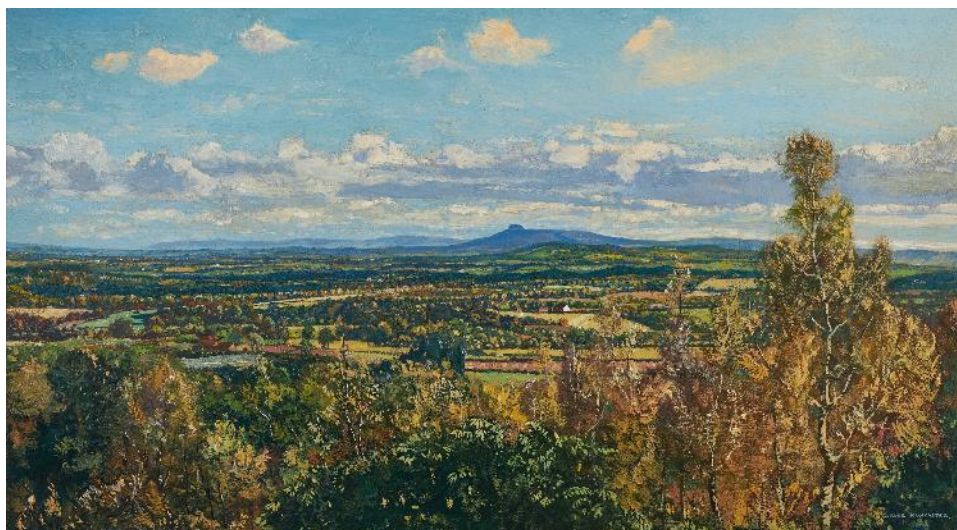


THE PETWORTH PARK ANTIQUES & FINE ART FAIR

Friday 19 to Sunday 21 May 2023



'View from Upperton towards Chanctonbury Ring, West Sussex' by Claude Graham Muncaster, P.R.S.M.A., R.W.S., R.O.I., R.B.A. (1903-1974), oil on board, signed, 18¼ x 32¼ in. (46.3 x 82 cm), £5,500 from Rountree Tryon Galleries

The **Petworth Park Antiques & Fine Art Fair** is taking place at a slightly later time in May this year. This annual event was originally scheduled for its usual spot in early May, but with a far more important event taking place on 6 May (the coronation of King Charles III) and the subsequent bank holiday weekend, **The Petworth Park Antiques & Fine Art Fair** is now opening on **Friday 19 to Sunday 21 May 2023**. As usual, a purpose-built marquee will be set up in the Lancelot 'Capability' Brown 400-acre deer park belonging to the National Trust's Petworth House in Petworth, West Sussex to comfortably house the 60 plus exhibitors and catering with free parking for antiques fair visitors right outside.

"Since we started this Fair in the grounds of Petworth House, in 2015, we have had enormous support from the **National Trust**, the **Petworth Business Association**, **Petworth Antiques And Decorative Arts association** and local businesses, who really embrace our annual event and influx of visitors," said organiser Ingrid Nilson of **The Antiques Dealers' Fair Limited**. "A number of Petworth art and antiques dealers even exhibit within the fair, as well as putting on a superb display within their shops and galleries. With the courtesy bus we provide, it is easy for visitors to take full advantage of all that is on offer within the market town of Petworth and **Petworth House** whilst visiting our fair. Now that life has opened up again, since the pandemic, the **National Trust** has kindly restored welcoming antiques fair ticket holders, free-of-charge and we reciprocate by admitting **National Trust** members to the fair.

A newcomer to this year's fair is **W. Shanshan 珊然軒** amongst whose stock is a Han dynasty (206 BCE-220 BCE) Sichuan terracotta dancer 漢代川蜀舞女俑, £12,500 and a late Yangshao culture, Dahe Village painted pottery jar with white

THE ANTIQUES DEALERS FAIR LIMITED

The Petworth Park
Antiques & Fine Art Fair

19 - 21 May 2023



Pair of Rockingham porcelain
candlesticks, English, c.1830,
£4,850 from Fileman Antiques



A 1950's Olympic competition
Baby-foot *La National* table
by Tousjeux et Nouveautés
of Geneva, £11,500 from
Hatchwell Antiques

P.O. Box 119
Cranbrook
Kent TN18 5WB
Telephone
01797 252030
E-mail
info@adfl.co.uk
Web
www.adfl.co.uk
Reg. no. 04293279
(England & Wales)

background 仰韶文化後期大河村彩陶罐, c.2500 BCE, £11,500. Returning to Petworth with Chinese porcelain is **Santos London**.

Petworth shops already signed up include **Bear Petworth**, **Augustus Brandt** and art galleries **Ottocento** and **Rountree Tryon Galleries**. Highlights on **Rountree Tryon Galleries'** stand are *The Old Slip, Newlyn* an oil on canvas by Harold Harvey (1874-1941), signed and dated '08, £52,000 and a *Sussex View from Upperton towards Chanctonbury Ring, West Sussex* signed oil on board by Claude Graham Muncaster (1903-1974), priced at £5,500.

Local to Petworth, glass specialist **Fileman Antiques** has a fine pair of Rockingham porcelain candlesticks with gilt decoration, hung with the most unusual spade drops and notch cut spangles, English, c.1830, £4,850. Rockingham porcelain was produced in two distinct periods. 1826-1830, the so called red-mark period, and 1831-1842, the puce-mark period. Rockingham was best known for its finely decorated and opulent rococo style porcelain. Orders from royalty lead to use of the subtitle 'manufacturer to the King' from 1831. On the subject of candlesticks, campaign furniture experts **Christopher Clarke Antiques** has a pair of American sterling silver Brighton buns travelling candlesticks, decorated with a Rococo design, circa 1870, priced in the region of £1,100. The dishes have gilt interiors and are marked 'Sterling 66'. For travel the candle sconces are unscrewed at the base of their column, one has a screw thread and the other a threaded hole. They are placed in one dish with the other dish screwed onto it to form a bun shape, containing the sconces.

M&D Moir is coming with a signed Emile Gallé deeply cut cameo *Primula* vase, c.1908, £2,950; a rare Fachschule Haida vase with polychrome parrots, c.1915, £1,980 and an L.C. Tiffany Favrite vase, signed, c.1905, £2,200. **Hickmet Fine Arts** and **Morgan Strickland Decorative Arts** return with their 19th to mid-20th century glass, ceramics and sculpture. **Tom Rooth** exhibits art and his own hand drawn ceramic designs, amongst which is *Octopus* framed in an early 20th century ship's porthole, £3,350. **Garret & Hurst Sculpture** exhibits with contemporary and 19th bronzes with a highlight being 'Le Penseur' by Julien Monier (French, fl. 1890-1915), £5,975.

William Cook returns with an important George III console table with the original marble top, £10,000. Other furniture specialists exhibiting include **Jeroen Markies Art Deco**, **Walton House Antiques**, **Millington Adams**, **Mark Buckley Antiques** and **Hatchwell Antiques** bringing a 1950's Olympic competition Baby-foot *La National* table by Tousjeux et Nouveautés of Geneva with frosted glass pitch, working pull rod mechanism for ball release and abacus scoring, £11,500.

Amongst the paintings for sale on **Lucy B. Campbell's** stand is work by Sussex artist Anna Pugh (b. 1938) including *Mists of Time*, acrylic on board. **The Swan Gallery** brings paintings by Marcel Dyf and William Lee-Hankey's *The Goose Girl*, oil on canvas, £22,000 and maps including 'Hampshire, by C Saxton Corrected and many Additions by P Lea' (amendment using the original Saxton plate of 1579), 1720, £2,400. **Blackbrook Gallery** returns with its naïve animal



18ct gold Swiss quarter repeating pocket watch, c.1910, £3,250 from Shapiro & Co.



Pair of American sterling silver Brighton buns travelling candlesticks, c.1870, in the region of £1,100 from Christopher Clarke Antiques



Georg Jensen Modernist silver pendant and chain designed by Nanna Ditzel, 1960s, £695 from Dansk Silver by Jane Burgett



'Le Penseur' by Julien Monier, bronze on granite, £5,975 from Garret & Hurst Sculpture

paintings, such as *Proud Farmer with his prize Hereford Steer and Cotswold Ram*, oil on canvas, signed and dated L Beattie 1833, £14,950.

Jewellery comes in several guises with Georg Jensen and other Scandinavian jewellery from **Dansk Silver by Jane Burgett** including an early twenties' Georg Jensen silver grape vine leaf necklace, no 96, designed by Harald Nielsen, £1,750. **Greenstein Antiques** has an Art Deco diamond bracelet, £12,950 whilst **Shapiro & Co.** has an 18ct. gold, ruby and diamond pendant, c.1900, £6,750 and an 18ct gold Swiss quarter repeating pocket watch, c.1910, £3,250. **Timewise Vintage Watches** exhibits with an impressive selection of timepieces by Rolex, Patek Philippe, Cartier and other designer vintage pieces. Those seeking clocks are well catered for, as both BBC Antiques Roadshow clock expert **Richard Price** and **Olde Time** are exhibiting. Silver dealer **J.H. Bourdon-Smith Ltd** is exhibiting again joining regular silver specialist **Stephen Kalms Antiques**.

Tickets are £10 each and can be booked through Eventbrite at <https://PetworthParkFair.com.eventbrite.co.uk>. Tickets include complimentary access to Petworth House and Park over the three days. Free entry to the antiques fair for National Trust members. See www.petworthparkfair.com for more information.

PRESS ENQUIRIES:

Gail McGuffie PR

Telephone: +44 (0)7885 10 33 53

Email: MGailMcG@aol.com

Notes to editors:

All items for sale at this fair are vetted for quality and authenticity. The majority of the exhibitors are members of the UK's two professional associations: The British Antique Dealers' Association or LAPADA The Association of Art & Antiques Dealers.

The fair raises funds for the **Queen Elizabeth Scholarship Trust** and is supported by the **National Trust, Brilliant Gin, Hennings Wine, Glanvilles Solicitors, Kirker Holidays, Petworth Antiques And Decorative Arts association, Petworth Marquees and Petworth Business Association.**

Event: The Petworth Park Antiques & Fine Art Fair

Venue: The Marquee, Petworth House and Park, Petworth, West Sussex GU28 0QY

Dates: Friday 19 to Sunday 21 May 2023

Opening Times: Friday 11.00 to 18.00, Saturday 10.30 to 18.00, Sunday 10.30 to 17.00

Tickets & Enquiries: *£10 including catalogue (and re-admission) through Eventbrite <https://PetworthParkFair.com.eventbrite.co.uk>
*Tickets include complimentary access to Petworth House and Park over the three days. Free entry to the antiques fair for National Trust members.
The Antiques Dealers Fair Ltd +44(0)1797 252030 or info@adfl.co.uk

Transport: By Road: A272 Tillington Road (antiques fair entrance at New Lodges).



Emile Gallé deeply cut cameo Primula vase, c.1908, £2,950 from M&D Moir



Art Deco diamond bracelet £12,950 from Greenstein Antiques



'Proud Farmer with his prize Hereford Steer and Cotswold Ram' oil on canvas by L. Beattie, 1833, £14,950 from Blackbrook Gallery



George III console table with the original marble top, £10,500 from William Cook

AA signposted to the dedicated entrance at New Lodges.
Ample free parking in the specially located antiques fair car park in
Petworth Park. Pedestrian entrances via the Cowyard and the Cricket
Lodge gate. Courtesy shuttle bus to/from Petworth town.

Nearest railway station: Pulborough (approx 70 minutes from London
Victoria)

Nearest airports: Gatwick (approx 50 minutes), Heathrow and
Southampton airports (approx 1 hour).

Charity: Queen Elizabeth Scholarship Trust (QUEST) (charity no. 1152032)
www.quest.org.uk

Social Media: Facebook: @AntiquesDealersFairLtd, Instagram: @adffairs
Twitter: @ADFLfairs

Website: www.petworthparkfair.com



Sichuan Dancer 漢代川蜀舞女俑,
Han Dynasty (206-220 BCE),
£12,500 from W. Shanshan 珊珊軒