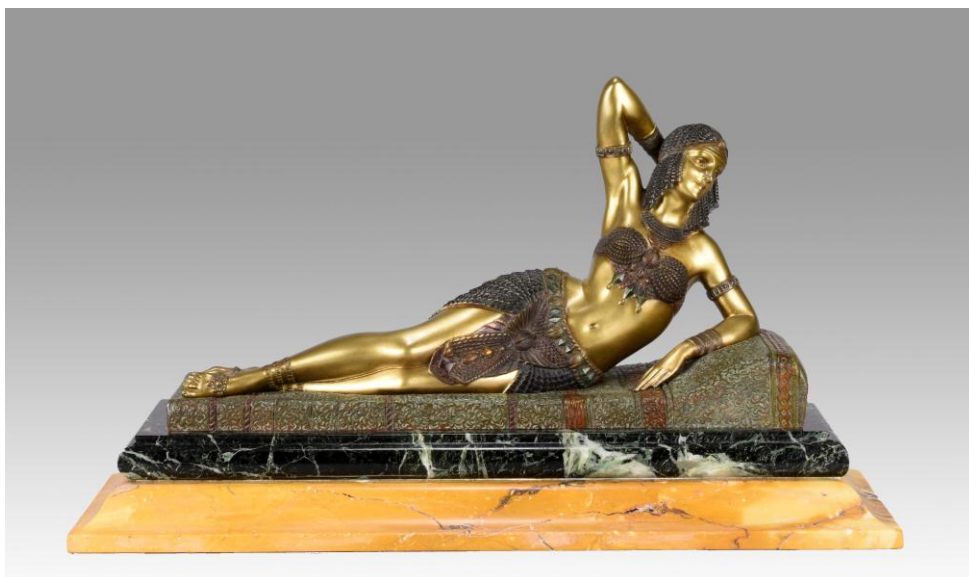


**THE MAYFAIR ANTIQUES & FINE ART FAIR  
KICKS OFF THE 2020 LONDON FAIRS' SEASON  
Thursday 9 to Sunday 12 January 2020**



'Cleopatra' cold painted bronze study of the beautiful Egyptian Queen Cleopatra reclining and luxuriating on her day bed, signed by DH Chiparus, 26cm high x 48cm wide, c.1925, £14,500 from Hickmet Fine Arts

Opening the 2020 London fairs' season in style is the eight incarnation of The Mayfair Antiques & Fine Art Fair at the London Marriott Hotel Grosvenor Square, London W1K 6JP from Thursday 9 to Sunday 12 January 2020. People from around the globe have made their way to the five star hotel for this impressive event since its inception. Featuring some 40 exhibitors bringing an extraordinary variety of art and design, covering many centuries right up to the 21st century, interior design professionals, collectors and discerning visitors will be spoilt for choice when feasting their eyes on the items for glamorous interiors, personal adornment or a unique gift, all for sale under the one roof.

Art Deco enthusiasts can bask in the offerings from **Jeroen Markies Art Deco**, amongst which is a three piece cloud suite, £8,900, designed by Harry & Lou Epstein, designers and producers of some of the most innovative furniture of the period. The suite comprises a three-seater cloud back sofa and two armchairs with straight grain walnut show wood, upholstered in cream leather and Alcantara suede. Or find a pair of armchairs in burr walnut, crosswind satin birch detailing and satin birch legs, c.1930, £3,950 also by the Epstein brothers. Traditional antique furniture can be found on **S&S Timms Antiques'** stand, including a delightful early 18th century solid walnut bureau bookcase with double domed top, c.1720, selling for £14,500 and a rarely found pair of Regency period giltwood and gesso overmantel mirrors with Roman scenes and elegant carved columns, c.1820, £7,750.

To add a focal point, splash of colour or elegance to a room, there is a marvellous choice of art from traditional English landscape paintings from **Cambridge Fine Art**, original paintings by Berlin artists including Walter Lindner (1936-2007) from **Berlin Walls Gallery**, to the work of talented contemporary artists like Jim Starr from **Rountree Tryon Galleries**. **Haynes Fine Art - London & Cotswolds** has oil paintings by French artists Marcel Dyf, Antoine Bouvard, Gabriel Deschamps and Claude Venard for sale, as well as Scottish artist Donald McIntyre.

**THE  
ANTIQUES  
DEALERS  
FAIR  
LIMITED**

**THE  
MAYFAIR  
ANTIQUES & FINE  
ART FAIR**

9-12 January 2020



Pair of Art Deco Harry & Lou Epstein armchairs in burr walnut, satin birch detailing and legs, English, c.1930, £3,950 from Jeroen Markies Art Deco



Rare George III silver 'Drum' tea caddy, made in London by William & Aaron Lestourgeon, 1770, £7,950 from Mary Cooke Antiques

P.O. Box 119  
Cranbrook  
Kent TN18 5WB  
Telephone  
01797 252030  
E-mail  
info@adfl.co.uk  
Web  
www.adfl.co.uk  
Reg. no. 04293279  
(England & Wales)

**Paul Mayhew Fine Art** is showing a small painting by one of the most famous Dutch artists of the 19th century. Andreas Schelfhout's *Gathering Winter Fuel* is an oil on canvas laid on panel. Schelfhout (1787-1870) was a forerunner of the Hague School and became one of the most influential Dutch landscape artists of his century with his paintings of winter, canal and skating scenes. His paintings are held in museums around the world from The National Gallery in London and The Rijksmuseum in Amsterdam, to The Metropolitan Museum of Art in New York. This painting has been in a private collection for over 60 years having been purchased from The Omell Galleries in London's St. James's in January 1957.

Silver specialists include **Stephen Kalms Antiques** from the London Silver Vaults and **Mary Cooke Antiques** with an extremely rare and exceptionally fine George III silver 'drum' tea caddy, made in London by William & Aaron Lestourgeon, dated 1770, with an asking price of £7,950. This rare drum shape was only produced for a short period during the early 1770s before the advent of the oval designs.

Silver in the form of jewellery comes from **Gråsilver** specialising in original Scandinavian pieces from well known names like Georg Jensen, amongst which is a very rare silver necklace with rutilated quartz and amethyst by Vivianna Torun Bülow-Hübe for Georg Jensen, 1960, £7,000 and some one-off pieces of art, designed and signed by Finnish master jeweller Matti Hyvärinen from Turku in the 1960s. Hyvärinen died last year and these unique pieces were bought direct from his family. Other jewellery dealers include **Wimpole Antiques**, **Anthea AG Antiques**, **Markov**, **Precious Flora** and **T Robert**. A fine platinum Art Deco calibrated sapphire and diamond bracelet set with a fine one carat marquise diamond centre dates from c.1925 and is offered for £26,000 from **T Robert**, who also has a charming 18ct gold guilloché enamel and diamond set tortoise brooch with movable head and tail, c.1895, £3,350 and a Russian 14ct two-colour gold, green guilloché enamelled and diamond locket with its original gold and natural pearl chain, c.1899, £6,850. For three decades, **The Antique Enamel Company** has been one of London's premier dealers in 18th to early 20th century English and Continental enamels, selling gold boxes, objects of vertu, porcelain, etui & sewing items, Fabergé, rare perfume bottles and more. Some of this extensive collection is making its way to The Mayfair Antiques & Fine Art Fair in January 2020.

**Garret & Hurst Sculpture** brings 19th century animalier, figurative and contemporary work. Arts and Crafts, Liberty, Knox, Art Nouveau bronzes, art glass and pewter can be found on **Morgan Strickland Decorative Arts'** stand. **Hickmet Fine Arts** presents the finest Art Deco and Art Nouveau antique sculpture and art glass from well-known names like Chiparus, Preiss, Lorenzl, Barye, Bonheur, Mêne, Lalique, Daum, Gallé, Loetz. **M&D Moir** has been trading in the best Art Nouveau & Art Deco glass for over 20 years and particularly specialises in French and Bohemian glass by such makers as René Lalique, Emile Gallé, Baccarat, D'Argental, Loetz, and Harrach with the focus on pieces produced between 1890 and 1925. Amongst the glass for sale, **M&D Moir** has a selection of L C Tiffany Favrite signed, small and miniature glass pieces in the traditional gold finish, as well as some in much rarer colours, the tallest being 3 inches, c.1895-1910, with prices ranging from £225 to £2,250. Longstanding ceramics expert **Carolyn Stoddart-Scott** offers antique porcelain, pottery and decorative ceramics from a small single item to complete sets.

BBC Antiques Roadshow clock specialist, **Richard Price** returns with his fine collection, amongst which is a late 18th century French ormolu mantel clock, the dial signed Robert à Paris. The silk suspension movement is set in an architectural case with waterfalls, flanked by Apollo with his lyre, £5,750. With timepieces on a smaller scale, **Timewise** brings an impressive collection of men's and women's vintage watches by Rolex and Patek Philippe, as well as a pilot's watch of the Royal Navy's Fleet Air Arm by Lemania, issued between 1945 and 1950, £2,950.



George III period oval gilt pier mirror, c.1780, £4,950 from S&S Timms Antiques



Art Deco calibrated sapphire, diamond and platinum bracelet, c.1925, £26,000 from T Robert



'Rain' cameo and enamelled glass pillow vase by Daum Frères, signed, £9,500 from Hickmet Fine Arts



'Le Port' by Claude Venard (1913-1999), oil on canvas, priced in the region of £10,000 - £15,000 from Haynes Fine Art - London & Cotswolds

Director of **The Antiques Dealers Fair Limited**, Ingrid Nilson said, "We are continuing to build on the successes of previous years, with our LAPADA and BADA exhibitors putting on an impressive show of high quality antiques and fine art for sale from many different eras and interests. We look forward to welcoming our regular and new clients, who come to explore the plethora of exceptional differing works for sale."

"The fair is supported by Mayfair property guru Wetherell, Brilliant Gin and First Class Holidays. Visitors can take advantage of all the five star London Marriott Hotel Grosvenor Square has to offer, including its restaurants and bars, and we arrange light refreshments within the fair across all four days."

## PRESS INFORMATION & JPEG IMAGES AVAILABLE FROM:

Gail McGuffie PR                      or            IONA PR  
 T: +44 (0)7885 10 33 53                      T: +44 (0)7721 030 825  
 E: MGailMcG@aol.com                      E: iona@ionapr.com

### Notes to Editors:

The fair is vetted with a general dateline of 1970 for most disciplines.

**Event:** The Mayfair Antiques & Fine Art Fair, supported by Wetherell, Brilliant Gin and First Class Holidays

**Venue:** The London Marriott Hotel Grosvenor Square, London W1K 6JP (entrance in Duke Street)

**Dates & Opening times:** Thursday 9 – Sunday 12 January 2020  
 Thursday 12 noon – 9pm, Friday 11am – 6pm,  
 Saturday 11am – 6pm, Sunday 11am – 5pm

**Tickets & enquiries:** £10, including catalogue (and re-admission) on the door or through Eventbrite: <https://tinyurl.com/y4y8bal2>

The Antiques Dealers Fair Ltd  
 +44 (0)1797 252030 or [info@adfl.co.uk](mailto:info@adfl.co.uk)

**Transport:** Nearest underground station: Bond Street (Central and Jubilee lines)

Nearest bus stops: Oxford Street

Nearest off-street parking: NCP, 39-44 Adams Row, London W1K 2HP (congestion charge zone)

Nearest railway stations: Marylebone (1.1 miles), Paddington (1.4 miles), Charing Cross (1.5 miles), Victoria (1.7 miles), Waterloo (3.1 miles)

Nearest airports: London City Airport (40 minutes), Heathrow Airport and Gatwick Airport (60 minutes)

**Charity:** Queen Elizabeth Scholarship Trust (QUEST) (charity no. 1152032) [www.quest.org.uk](http://www.quest.org.uk)

**Social Media:** Twitter & Instagram: @ADFLfairs  
 Facebook: <https://www.facebook.com/AntiquesDealersFairLtd/>

**Website:** [www.mayfairfair.com](http://www.mayfairfair.com)



18ct. gold one-off art jewellery signed by Matti Hyvärinen, Finland, c.1960, POA from Gräsilver



'Gathering Winter Fuel' by Andreas Schelfhout (1787-1870), oil on canvas laid on panel, signed, POA from Paul Mayhew Fine Art



Late 18th century French ormolu mantel clock with waterfalls flanked by Apollo with his Lyre, the dial signed Robert à Paris, £5,750 from Richard Price



'Pheasant' by Jim Starr, acrylic & mixed media on canvas, £4,950 from Rountree Tryon Galleries



'Sitting Couple 1971' by Lynn Chadwick (1914-2003), numbered 2/6, signed and dated 1971, £68,000 from Jeroen Markies Art Deco