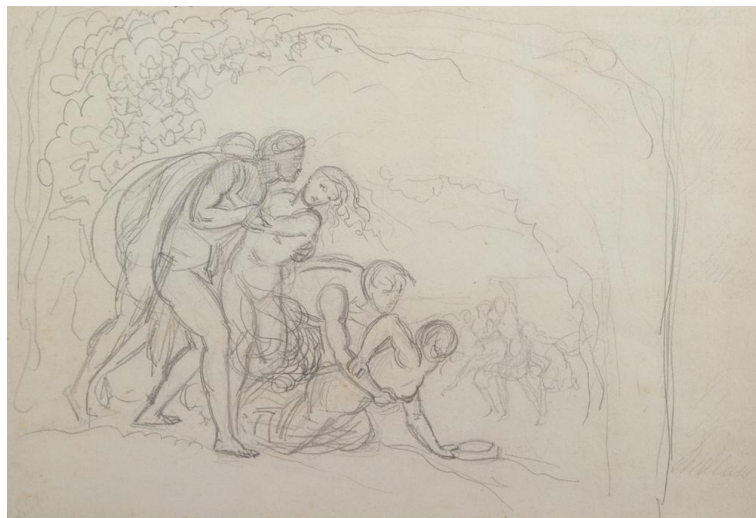


THE PETWORTH PARK ANTIQUES & FINE ART FAIR
The Marquee, Petworth Park, Petworth House, West Sussex
Friday 5 - Sunday 7 May 2017



Sketch for 'Tribe of Benjamin Seizing their Brides'
by Sir John Everett Millais PRA (British 1829 - 1896), pencil, 7¾" x 11½",
priced in the region of £15,000 - £25,000 from Haynes Fine Art

The **Petworth Park Antiques & Fine Art Fair** is taking place for the third year running, from **Friday 5 to Sunday 7 May 2017**, in a purpose built marquee in the Capability Brown landscape designed Petworth Park, Petworth, West Sussex GU28 0QY. Petworth Park is the 700 acre deer park that surrounds the palatial Petworth mansion, immortalised in JMW Turner's paintings. In the care of the National Trust, it is home to some of the nation's most impressive art, including pictures by Turner, Van Dyck, Reynolds and Blake.

The first two years of this event, organised by **The Antiques Dealers Fair Limited**, have been really well received with collectors, interior decorators and discerning individuals gathering from all over the south of England, and from further afield, to enjoy the art and antiques for sale, the grounds and the treasures in the great house. In 2017, some 48 dealers, mainly members of the UK's two professional associations - the British Antique Dealers' Association and LAPADA The Association of Art & Antiques Dealers - are congregating with their finest art and antiques from contemporary and antique sculpture, oil and watercolour paintings, illustrations, jewellery, traditional and country furniture, lighting, glass, ceramics, silver, barometers, clocks and vintage watches, decorative pieces and objets d'art, dating across several centuries.

Dealers taking stands, for the first time, are **Lucy B Campbell Gallery** selling emerging, contemporary British, European and American art; **Morgan Strickland Decorative Arts**; BBC Antiques Roadshow clock expert, **Richard Price**; glass specialist **M&D Moir**; **Marais Fine Arts** from Guernsey exhibiting traditional modern British and South African art, **Walton House Antiques** with fine traditional furniture and **Timewise** bringing vintage watches by Rolex, Patek Philippe and more.

Amongst the Sussex exhibitors are **Augustus Brandt**, purveyors of luxury lifestyle and gifts in the market town of Petworth; **Fileman Antiques**, specialising in and restoring chandeliers, lighting and antique glass since the 1890s; **Garret & Hurst Sculpture**, dealing in 19th century and contemporary sculpture; sculptor **Jonathan Knight** bringing his contemporary bronzes of magnificent wildlife; **Merville Galleries** with 20th century and contemporary art by established and emerging artists; **Moncrieff-Bray Gallery**, run by former Victoria & Albert Museum curator and arts journalist, Elspeth Moncrieff; London based **Rountree Tryon Galleries** that recently opened a new gallery

Cont'd...

THE
ANTIQUES
DEALERS
FAIR
LIMITED

The Petworth Park
Antiques & Fine Art Fair

5 - 7 May 2017



Cattleya orchid cameo glass vase
by Emile Gallé, French, c.1900,
£4,800 from M&D Moir



Rare French Empire bronze &
ormolu mantel clock, depicting
the grape harvest, c1810, £7,950
from Richard Price

P.O. Box 119
Cranbrook
Kent TN18 5WB
Telephone
01797 252030
E-mail
info@adfl.co.uk
Web
www.adfl.co.uk
Reg. no. 04293279
(England & Wales)

in Petworth; **Tim Saltwell** selling 19th century English and Continental antique furniture, from Regency to Edwardian, and **Wilson's Antiques** with a selection of furniture, paintings and objects.

Moncrieff-Bray Gallery uses the event to preview its forthcoming art exhibition, opening later in the month of May. This time 'Exploring the Land - Two Ways of Seeing' looks at how two artists, John Hitchens and Anthony Garratt, have responded to the landscape of Sussex, both of them painting 'en plein air'; John Hitchens over the past 45 years and Anthony Garratt, whose work has been completed during the last year. In addition, the gallery is showing a fine selection of outdoor sculpture displayed in the parkland, leading people from The Marquee towards the vast 17th century Petworth mansion. Other paintings depicting Sussex locations include *Arundel Park looking towards Amberley, West Sussex* by William Henry Mason (1860-1930), c1800, which shows Petworth in the distant top left, priced at £1,350 from **Wilson's Antiques**. *Tidal Creek, Chichester Harbour* by Keith Shackleton, oil on board, 61 x 122cm, 1969, £8,750 and several watercolour and pencil studies by Sussex born Claude Muncaster (1903-1974), like *Sadler's Row, Petworth* 19cm x 28.5 cm, 1921, £650 are both on **Rountree Tryon Galleries'** stand.

Haynes Fine Art of London and the Cotswolds is bringing a pencil sketch for *Tribe of Benjamin Seizing their Brides* by Sir John Everett Millais PRA (British, 1829-1896), 7¾" x 11½", priced in the region of £15,000-£25,000. Other picture dealers exhibiting include **Cambridge Fine Art** with Victorian paintings by renowned British artists, **The Jerram Gallery** from Dorset showing paintings and sculpture by established contemporary and emerging artists, London and Oxfordshire based **Sarah Colegrave Fine Art** with mainly 19th and 20th century British pictures, **Elford Fine Art** bringing a fine selection of period and contemporary paintings, **The Canon Gallery** selling oils and watercolours by 18th, 19th and 20th century artists, and **Baron Fine Art** from Chester with a diverse selection, including a watercolour of *Shoreham* by Thomas Bush Hardy RBA (1842-1897), £1,900.

Jewellery is always a draw and **Richard Ogden Ltd** will not disappoint. Amongst the pieces for sale is a fine quality Art Deco pendant set with a cushion cut aquamarine surmounted by a baguette and brilliant cut diamond set pendant loop in platinum; the aquamarine measures approx. 30 mm by 26 mm, estimated at 77 carats and priced at £22,500, as well as a butterfly brooch with an opal abdomen and diamond set wings in silver on yellow gold, the body and eyes with cabochon rubies, wing span approx. 45 mm, c.1900, selling for £3,750. Another insect can be found with **T Robert**, this time a 15ct gold ruby-eyed spider pendant with Russian demantoid garnets and diamonds, c1895, with a price tag of £1,475. **Sue Brown** has quirky jewels from the past and **Markov** comes with a French Art Deco diamond and platinum brooch, priced at £15,000 and, appealing to the male audience, *Le Coq Nain* car mascot, in the rarer topaz colour, c1928, selling for £2,500.

London silver specialist, **Stephen Kalms Antiques** is coming with a large selection of decorative items and tableware. Glass specialists include **Mark J West** and **M&D Moir**, who are bringing a Cattleya orchid cameo glass vase by Emile Gallé, French, c 1900, £4,000 and a pair of Japonaise glass vases by Baccarat, French, c 1890, £1,800 the pair. Art Deco and Nouveau decorative lighting, ceramics, glass and sculpture can be found on **Morgan Strickland Decorative Arts'** stand, including *Pigeon Ecosais*, a wooden sculpture by the Martel twins, Paris, 1926, signed J Martel, price £2,500.

With a number of vineyards in the area, **Richard Price's** rare French Empire bronze & ormolu mantel clock, depicting the grape harvest, seems particularly appropriate, c1810, £7,950. **Olde Time** returns with a large selection of clocks and barometers. Fine antique furniture comes from **Tim Saltwell** including an interesting late 19th century French kingwood and marquetry table de toilette, attributed to Paul Sormani, after the model by Jean-François Oeben held in the V&A collection, c1880, £5,250. Other furniture dealers include **William Cook** and **Melody Antiques** with country oak and an unusual George III mahogany plate rack, c1800, priced at £495.



'Pigeon Ecosais' wooden sculpture by Martel twins, Paris, 1926, £2,500 from Morgan Strickland Decorative Arts



Art Deco diamond and platinum brooch, French, £15,000 from Markov



'Rising Form VI' by Dominic Welch, bronze, edition of 5, POA from Moncrieff-Bray Gallery



Oak wainscot chair, dated 1699, £2,250 from Melody Antiques

Cont'd...

The fair is supported by the National Trust, Savills and Anderson Rowntree Solicitors, Nyetimber and Bold & Reeves, together with PAADA and the Petworth Business Association. Two charities benefit from the fair: David Shepherd Wildlife Foundation and the Queen Elizabeth Scholarship Trust (QEST), the charitable arm of the Royal Warrant Holders Association, that funds the education of talented craftspeople through traditional college courses, apprenticeships or one-on-one training with masters.

Tickets to the fair cost £10 each on the door or in advance through Eventbrite. As in the past two years, National Trust members will be granted free access to the fair and the National Trust has kindly agreed that antiques fair ticket holders can enjoy admission to the mansion and Pleasure Grounds free of charge. Light refreshments are available within the fair or visitors can take advantage of the many restaurants and cafés in Petworth itself. Parking is free for antiques fair visitors. AA signposted to the dedicated entrance at New Lodges.

PRESS INFORMATION & JPEG IMAGES AVAILABLE FROM:

Gail McGuffie PR or IONA PR
 T: +44 (0)20 8568 5466 T: +44 (0)1451 832 268
 M: +44 (0)7885 10 33 53 M: +44 (0)7721 030 825
 E: MGailMcG@aol.com E: iona@ionapr.com

Notes to editors:

The fair is vetted with a dateline of 1970 for most disciplines.

Event: The Petworth Park Antiques & Fine Art Fair, supported by the National Trust, Savills, Anderson Rowntree Solicitors, Nyetimber, Bold & Reeves, PAADA and the PBA.

Venue: The Marquee, Petworth Park, Petworth, West Sussex GU28 0QY

Date & Opening times : Friday 5 - Sunday 7 May 2017
 Friday 11am-8pm, Saturday 10.30am-6pm, Sunday 10.30am-5pm

Tickets & enquiries: *£10 including catalogue (and re-admission)
 The Antiques Dealers Fair Ltd +44(0)1797 252030 or info@adfl.co.uk
 and through Eventbrite <https://www.eventbrite.com/e/the-petworth-park-antiques-fine-art-fair-tickets-30224330787>

*Tickets include complimentary access to the palatial mansion and park of Petworth over the 3 days. Free entry for National Trust members.

Transport: By Road: A272 Tillington Road (antiques fair entrance at New Lodges). Pedestrian entrance through the Cricket Lodge. Ample free parking in the special located antiques fair car park in Petworth Park (follow Antiques Fair AA signs). Courtesy shuttle bus to/from Petworth town

Nearest railway station: Pulborough (approx 70 minutes from London Victoria)

Nearest airports: Gatwick (approx 50 minutes), Heathrow and Southampton airports (approx 1 hour)

Charity: David Shepherd Wildlife Foundation (charity no 110683) www.davidshepherd.org and Queen Elizabeth Scholarship Trust (QEST) (charity no. 1152032) www.qest.org.uk

Social Media: Twitter: @ADFL fairs, Facebook: AntiquesDealersFairLtd/, 新浪微博

Website: www.petworthparkfair.com



Chinese dragon silver cocktail shaker by Wang Hing, c1920, £1,850 from Augustus Brandt



'Woodland Enclosed' by John Hitchens, 16" x 34", 1998, in the region of £6,000 from Moncrieff-Bray Gallery



French kingwood and marquetry table de toilette, c1880, £5,250 from Tim Saltwell



'Amour' by Hippolyte François Moreau, bronze, c1886, £6,250 from Garret & Hurst Sculpture